

CHARLESTON, SOUTH CAROLINA

NOTE: Chart not to scale.

DEPARTURE ROUTE DESCRIPTION

TAKEOFF RUNWAY 3: Climb on heading 031° to 560, then right turn direct LOJRN, then on depicted route to PLMITO, thence. . . .

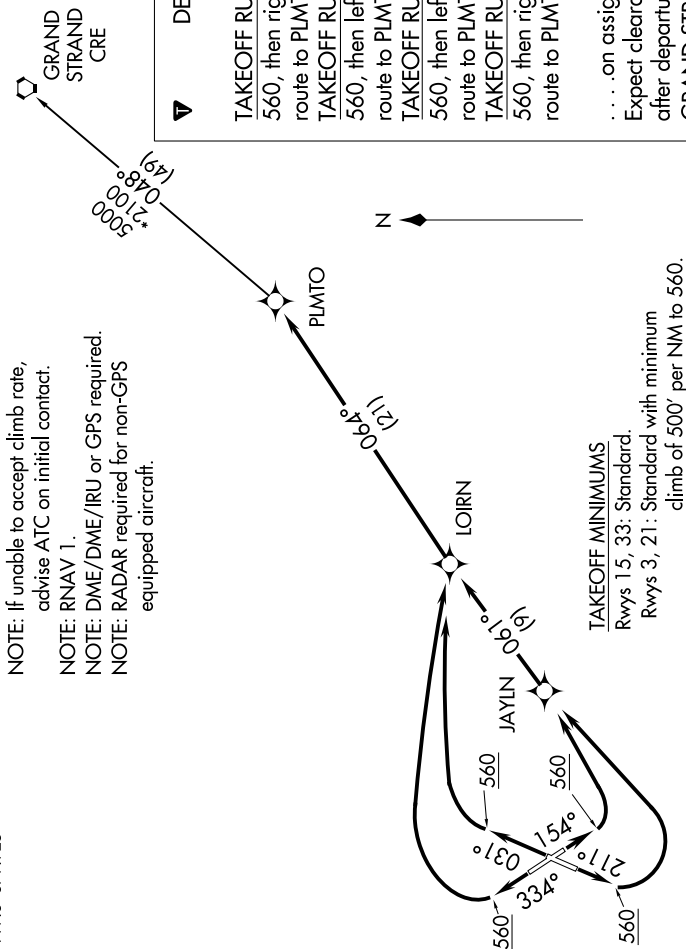
TAKEOFF RUNWAY 15: Climb on heading 154° to 560, then left turn direct JAYLN, then on depicted route to PLMITO, thence. . . .

TAKEOFF RUNWAY 21: Climb on heading 211° to 560, then left turn direct JAYLN, then on depicted route to PLMITO, thence. . . .

TAKEOFF RUNWAY 33: Climb on heading 334° to 560, then right turn direct LOJRN, then on depicted route to PLMITO, thence. . . .

... on assigned transition/route. Maintain 4000. Expect clearance to filed altitude within ten minutes after departure.

GRAND STRAND TRANSITION (PLMTO3.CRE):



| | |
|------------------|---------|
| ATIS | |
| 124.75 | |
| CINC DEL | |
| 127.325 | 291.65 |
| CPDLC | |
| GND CON | |
| 121.9 | 348.6 |
| CHARLESTON TOWER | |
| 126.0 | 239.0 |
| DEP CON | |
| 119.3 | 379.925 |

TAKEOFF MINIMUMS
Rwys 15, 33: Standard
Rwys 3, 21: Standard
climb of 500 ft

PLMTO THREE DEPARTURE (RNAV)

CHARLESTON, SOUTH CAROLINA
CHARLESTON AFB/INTL (CHS)

(PLMTO3.PLMTO) 05NOV20