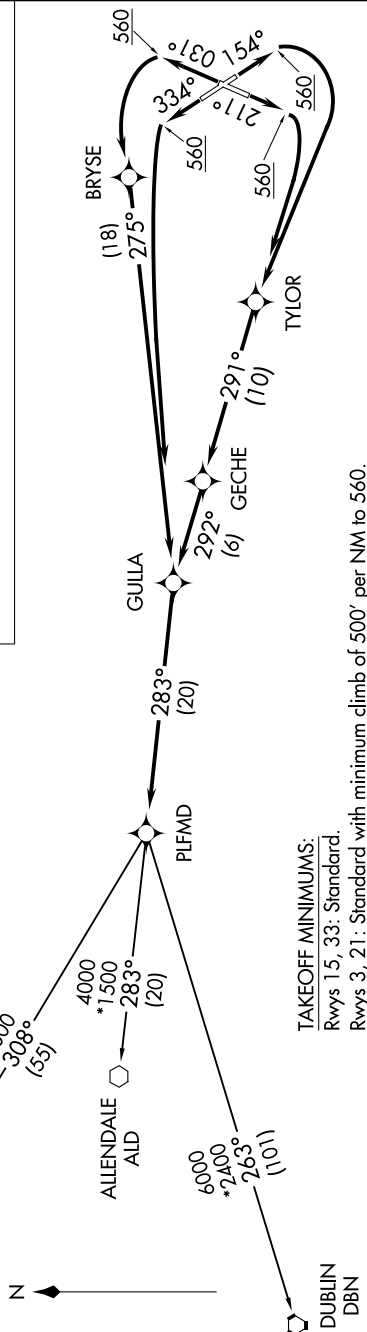


PLFMD TWO DEPARTURE (RNAV)

DEPARTURE ROUTE DESCRIPTION

TAKEOFF RWY 3: Climb heading 031° to 560 MSL, then left turn direct BRYSE, then on depicted route to PLFMD, thence. . . .
TAKEOFF RWY 15: Climb heading 154° to 560 MSL, then right turn direct TYLOR, then on depicted route to PLFMD, thence. . . .
TAKEOFF RWY 21: Climb heading 211° to 560 MSL, then right turn direct TYLOR, then on depicted route to PLFMD, thence. . . .
TAKEOFF RWY 33: Climb heading 334° to 560 MSL, then left turn direct GULLA, then on depicted route to PLFMD, thence. . . .
..... on assigned transition, maintain 4000. Expect clearance to filed altitude/flight level within ten (10) minutes after departure.

ALLENDALE TRANSITION (PLFMD2.ALD):
COLLIERS TRANSITION (PLFMD2.IRQ):
DUBLIN TRANSITION (PLFMD2.DBN):



NOTE: Chart not to scale.

SE-2, 03 DEC 2020 to 31 DEC 2020

PLFMD TWO DEPARTURE (RNAV)
(PLFMD2.PLFMD) 21JUL16

CHARLESTON, SOUTH CAROLINA
CHARLESTON AFB/INTL (CHS)