

WAAS CH 61240 W09A	APP CRS 094°	Rwy Idg 4650 TDZE 1459 Apt Elev 1470
--	------------------------	---

RNAV (GPS) RWY 9

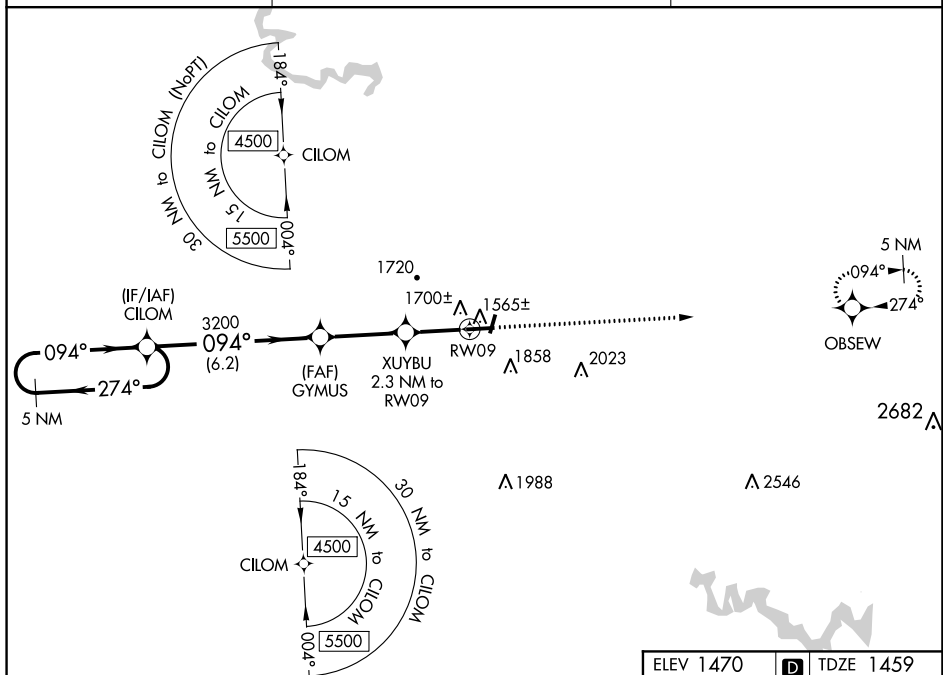
PIKE COUNTY-HATCHER FIELD (PBX)

T For uncompensated Baro-VNAV systems, LNAV/VNAV NA below -17°C (0°F) or
A above 54°C (130°F). DME/DME RNP-0.3 NA. Rwy 9 helicopter visibility
reduction below $\frac{3}{4}$ SM NA. Circling NA to Rwys 2 and 20.

MISSED APPROACH: Climb to 4500 direct OBSEW and hold.

AWOS-3PT
121.225

INDIANAPOLIS CENTER
126.575 257.85

UNICOM
122.8 (CTAF) **L**

5 NM Holding Pattern

VGS1 and RNAV glidepath not coincident (VGS1 Angle 3.00/TCH 35).

4500

274°

094°

094°

3200

GYMUS

3200

XUYBU

2.3 NM to RW09

*1.5 NM to RW09

*2220

RW09

GP 3.00° TCH 40

6.2 NM

3.1 NM


0.8 NM

1.5 NM

4500

OBSERV

*RNAV only.

CATEGORY		A	B	C	D
LPV	DA	1709-1		250 (300-1)	
LNAV/ VNAV	DA	1891-1½		432 (500-1½)	
LNAV	MDA	1960-1	501 (500-1)	1960-1⅜	501 (500-1⅜)
 CIRCLING		2120-1 650 (700-1)	2160-1 690 (700-1)	2160-2 690 (700-2)	2460-3 990 (1000-3)

ELEV 1470		TDZE 1459
-----------	---	-----------

_____	_____	_____
-------	-------	-------

HIRL Rwy 9-27 **L**
REIL Rwy 9 and 27 **L**