

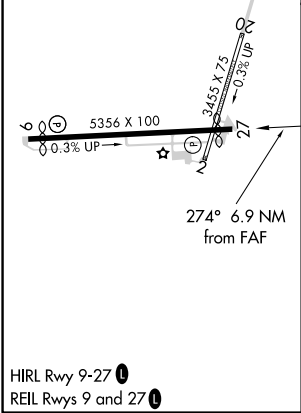
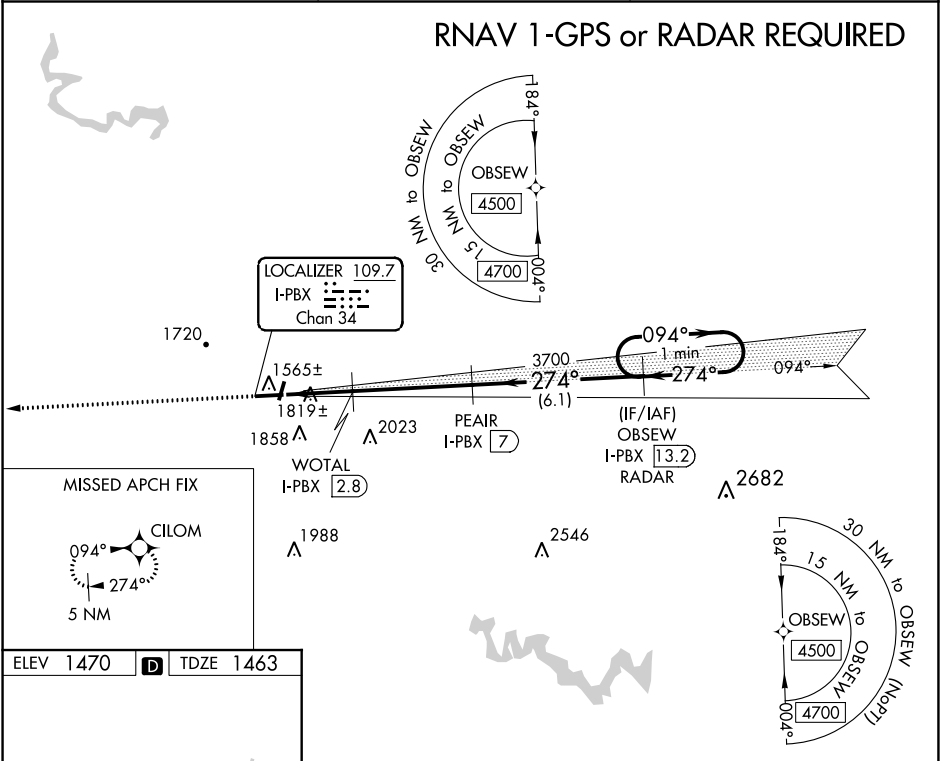
LOC/DME I-PBX 109.7 Chan 34	APP CRS 274°	Rwy Idg 4650 TDZE 1463 Apt Elev 1470
---	------------------------	---

ILS or LOC RWY 27

PIKE COUNTY-HATCHER FIELD (PBX)

<div><div>▼</div><div>▲ NA</div></div>	DME and RNAV 1-GPS required. Circling NA to Rwy's 2 and 20.	MISSED APPROACH: Climb to 4500 direct CILOM and hold.
--	--	--

AWOS-3PT 121.225	INDIANAPOLIS CENTER 126.575 257.85	UNICOM 122.8 (CTAF) 0
----------------------------	--	---------------------------------



4500	CILOM	PEAIR I-PBX [7]	OBSEW I-PBX [13.2] RADAR	One Minute Holding Pattern
* LOC only	* I-PBX [1.9]	WOTAL I-PBX [2.8]	3700	274°
I-PBX [0.2]	I-PBX [0.2]	I-PBX [0.2]	I-PBX [0.2]	I-PBX [0.2]
1.8 NM	0.9 NM	4.2 NM	6.1 NM	
CATEGORY	A	B	C	D
S-ILS 27	1663-1 200 (200-1)			
S-LOC 27	2080-1	617 (700-1)	2080-1 ³ / ₄	617 (700-1 ³ / ₄)
CIRCLING	2120-1 650 (700-1)	2160-1 690 (700-1)	2160-2 690 (700-2)	2460-3 990 (1000-3)

SE-1, 03 DEC 2020 to 31 DEC 2020

SE-1, 03 DEC 2020 to 31 DEC 2020