

WAAS CH 53624 W19A	APP CRS 188°	Rwy Idg TDZE Apt Elev	5000 431 436
--	------------------------	-----------------------------	---

RNAV (GPS) RWY 19

FAYETTE COUNTY (F'YE')

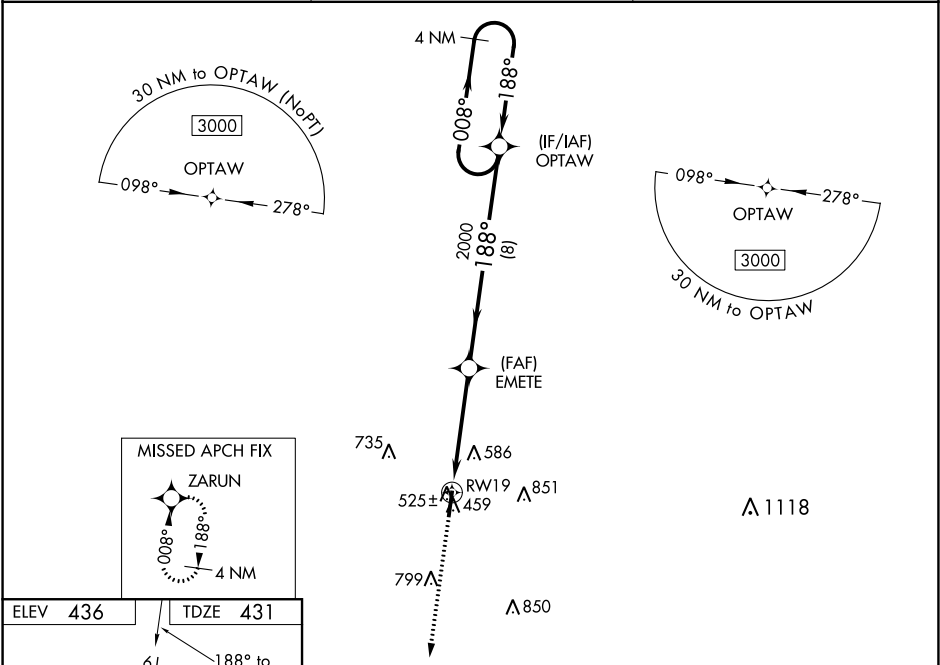
⚠

NA

Baro-VNAV NA when using Memphis Intl altimeter setting. For uncompensated Baro-VNAV systems, LNAV/VNAV NA below -15°C (5°F) or above 54°C (130°F). DME/DME RNP-0.3 NA. When local altimeter setting not received, use Memphis Intl altimeter setting and increase all DA 84 feet, all MDA 100 feet. Increase LPV all Cats visibilities ½ mile, LNAV and Circling Cat C ⅜ mile. Helicopter visibility reduction below ¾ SM NA.

MISSED APPROACH:
Climb to 3000 direct ZARUN and hold.

AWOS-3 119.875	MEMPHIS APP CON 125.8 338.3	CTAF 122.9
--------------------------	---------------------------------------	----------------------



ELEV 436	TDZE 431
-----------------	-----------------

3000 ZARUN				VGSI and RNAV glidepath not coincident (VGSI Angle 3.07/TCH 31).			
↑				OPTAW			
RW19				EMETE			
2000				2000			
4.5 NM				8 NM			
CATEGORY				A			
LPV DA				721-1			
LNAV/VNAV DA				683-1			
LNAV MDA				880-1			
CIRCLING				900-1			
				464 (500-1)			
				920-1			
				484 (500-1)			
				920-1½			
				484 (500-1½)			