

WAAS CH <b>40218</b> <b>W36A</b>	APP CRS <b>360°</b>	Rwy Idg <b>5001</b> TDZE <b>1003</b> Apt Elev <b>1003</b>
--	------------------------	---

RNAV (GPS) RWY 36

CENTRAL KENTUCKY RGNL (R.G.A.)

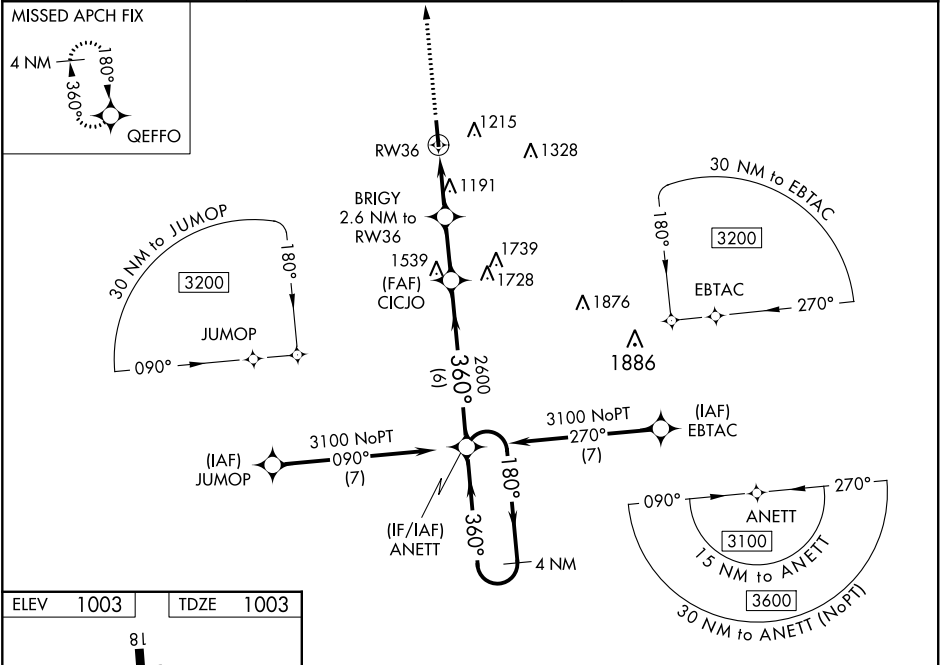
⚠

⚠

For uncompensated Baro-VNAV systems, LNAV/VNAV NA below -16°C (4°F) or above 54°C (130°F). DME/DME RNP-0.3 NA. When local altimeter setting not received, use Lexington altimeter setting and increase LPV DA to 1331 feet, LNAV/VNAV DA to 1345 feet and all MDA 80 feet; increase LPV all Cats and LNAV/VNAV all Cats visibility ¼ mile; increase LNAV Cats C and D ½ mile and Circling visibility Cat D ¼ mile. Helicopter visibility reduction below ¾ SM NA. VDP and Baro-VNAV NA when using Lexington altimeter setting.

MISSED APPROACH: Climb to 3100 direct QEFFO and hold.

AWOS-3 <b>119.625</b>	LEXINGTON APP CON <b>120.15 259.3</b>	UNICOM <b>122.725 (CTAF) 0</b>
--------------------------	--	-----------------------------------



ELEV 1003 TDZE 1003

3100 QEFFO

VGSI and RNAV glidepath not coincident (VGSI Angle 3.00/TCH 27).

4 NM Holding Pattern

\*LNAV only.

CATEGORY	A	B	C	D
LPV DA	1264-7⁄8		261 (300-7⁄8)	
LNAV/VNAV DA	1278-7⁄8		275 (300-7⁄8)	
LNAV MDA	1460-1 457 (500-1)		1460-13⁄8 457 (500-13⁄8)	
CIRCLING	1460-1 457 (500-1)	1520-1 517 (600-1)	1520-11⁄2 517 (600-11⁄2)	1780-21⁄2 777 (800-21⁄2)

RICHMOND, KENTUCKY  
Amdt 2B 21JUL16

37°38'N-84°20'W

CENTRAL KENTUCKY RGNL (R.G.A.)  
RNAV (GPS) RWY 36