

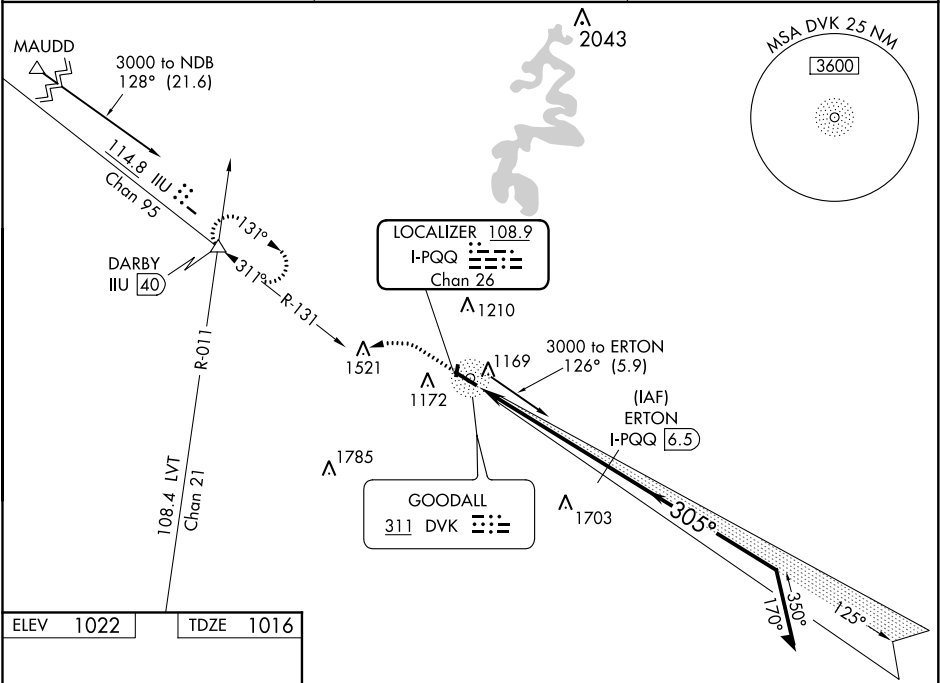
LOC/DME I-PQQ <b>108.9</b> Chan <b>26</b>	APP CRS <b>305°</b>	Rwy Idg TDZE Apt Elev <b>5000</b> <b>1016</b> <b>1022</b>
---	------------------------	--

LOC RWY 30  
STUART POWELL FIELD (DVK)

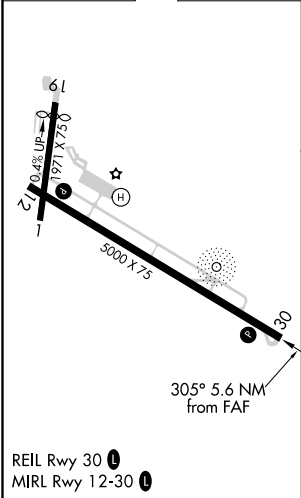
When local altimeter setting not received, use Lexington altimeter setting and increase all MDA 80 feet; increase S-30 Cat C-D visibility and Circling Cat C-D visibility ¼ mile. Rwy 30 helicopter visibility reduction below ¾ SM NA. Rwy 1, 19 helicopter visibility reduction below 1 SM NA. DME required. Circling Rwy 1, 19 NA at night.

MISSED APPROACH: Climb to 2000 then climbing left turn to 3000 on heading 260° and IIU R-131 to DARBY INT and hold.

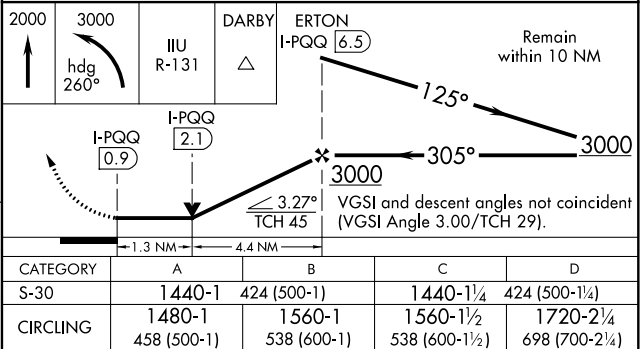
AWOS-3 <b>128.325</b>	LEXINGTON APP CON <b>120.15 259.3</b>	UNICOM <b>122.8 (CTAF)</b>
--------------------------	--	-------------------------------



ELEV 1022	TDZE 1016
-----------	-----------



DME REQUIRED



SE-1, 03 DEC 2020 to 31 DEC 2020

SE-1, 03 DEC 2020 to 31 DEC 2020