

WAAS CH 82311 W22A	APP CRS 218°	Rwy Idg TDZE 1025 Apt Elev 1025
--	------------------------	---

RNAV (GPS) RWY 22
UPPER CUMBERLAND RGNL (SR.B)

▼ Baro-VNAV NA when using Crossville altimeter setting. For uncompensated Baro-VNAV systems, LNAV/VNAV NA below -17°C (2°F) or above 54°C (130°F). DME/DME RNP-0.3 NA. When local altimeter setting not received, use Crossville altimeter setting and increase LPV DA to 1447, LNAV/VNAV DA to 1633. Increase LPV and LNAV/VNAV visibility ¾ mile. Increase all MDA 180 feet and LNAV Cat C visibility ¼ mile, Cat D ½ mile. Increase Circling Cat C/D visibility ¼ mile. VDP NA when using Crossville altimeter setting.

MISSED APPROACH:
Climb to 4000 direct WENUB and hold.

AWOS-3 128.25	MEMPHIS CENTER 132.9 290.3	UNICOM 122.975 (CTAF) 0
-------------------------	--------------------------------------	-----------------------------------

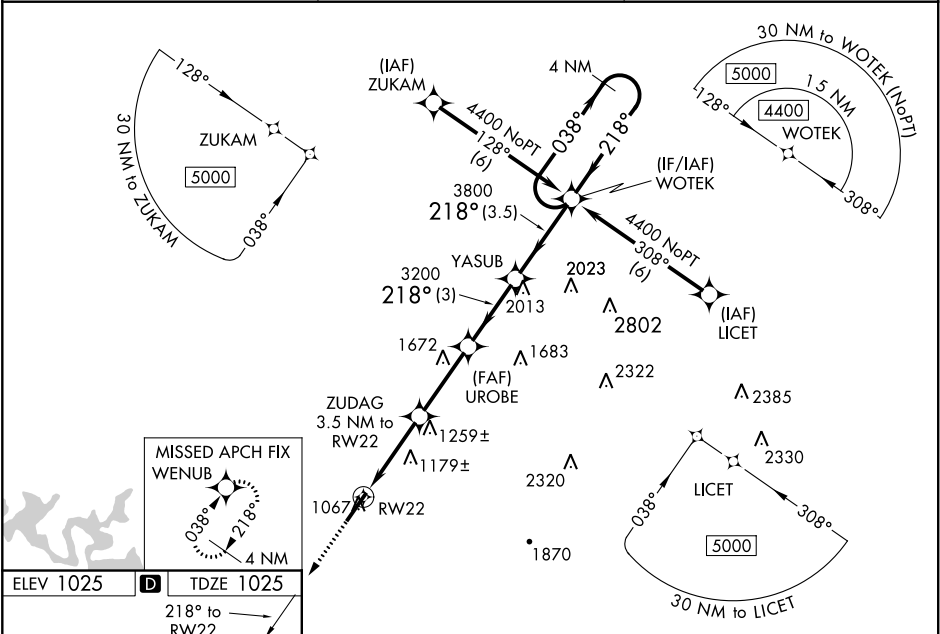


Diagram of Runway 22 showing dimensions 6704 x 100 and a star symbol.

4000

↑

WENUB

✦

VGSI and RNAV glidepath not coincident

(VGSI Angle 3.00/TCH 25).

WOTEK

4 NM Holding Pattern

YASUB

UROBE

ZUDAG

3.5 NM to RWY22

218°

038°

4400

218°

*LNAV only

RWY22

*1.2 NM to RWY22

*2200

3200

GP 3.00°

TCH 55

1.2 NM

2.3 NM

3 NM

3 NM

3.5 NM

CATEGORY	A		B		C		D	
LPV DA	1275-¾ 250 (300-¾)							
LNAV/VNAV DA	1461-1½ 436 (500-1½)							
LNAV MDA	1440-1		415 (500-1)		1440-1¼		415 (500-1¼)	
CIRCLING	1480-1		455 (500-1)		1480-1½		1580-2	
					455 (500-1½)		555 (600-2)	

HIRL Rwy 4-22

REIL Rwy 4 and 22

SE-1, 03 DEC 2020 to 31 DEC 2020

SE-1, 03 DEC 2020 to 31 DEC 2020