

WAAS CH 56312 W07A	APP CRS 072°	Rwy Idg TDZE 913 Apt Elev 913
--	------------------------	---

RNAV (GPS) RWY 7

FLEMING-MASON (F'GX)

RNP APCH.

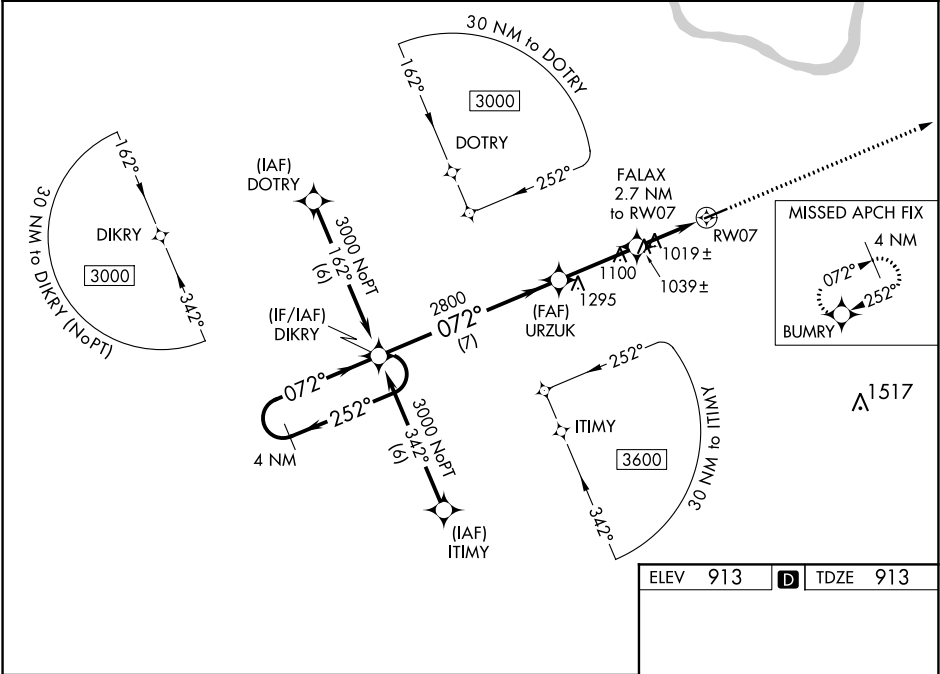
▼

▲

Baro-VNAV NA when using Lexington altimeter setting. For uncompensated Baro-VNAV systems, LNAV/VNAV NA below -16°C or above 47°C.
Rwy 7 helicopter visibility reduction below ¾ SM NA. When local altimeter setting not received, use Lexington altimeter setting: increase LPV DA to 1290 and all visibilities ¼ SM; increase LNAV/VNAV DA to 1383 feet and all visibilities ½ SM; increase all MDA 140 feet and LNAV Cat C visibility ¼ SM and Cat D ½ SM.

MISSED APPROACH: Climb to 3500 direct BUMRY and hold.

AWOS-3 118.125	INDIANAPOLIS CENTER 124.225 360.725	UNICOM 123.0(CTAF) 0
--------------------------	---	--------------------------------



4 NM Holding Pattern		VGSI and RNAV glidepath not coincident (VGSI Angle 3.00/TCH 20).		3500	BUMRY
3000		2800		*LNAV only	
GP 3.00° TCH 40		2800		*1800	
7 NM		3 NM		1.5 NM	
1.2 NM		1.2 NM			
CATEGORY	A	B	C	D	
LPV DA	1163-1		250 (300-1)		
LNAV/VNAV DA	1256-1¼		343 (400-1¼)		
LNAV MDA	1320-1 407 (500-1)		1320-1¼ 407 (500-1¼)		

