

WAAS CH 69340 W225A	APP CRS 251°	Rwy Idg 3502 TDZE 1254 Apt Elev 1255
---	------------------------	---

RNAV (GPS) RWY 25

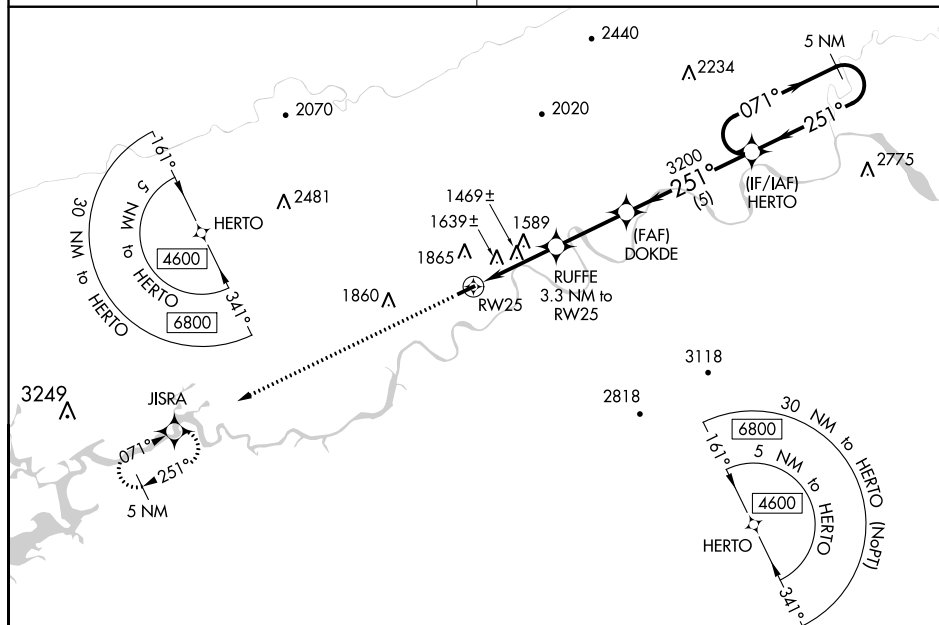
HAWKINS COUNTY (RVN)

NA DME/DME RNP-0.3 NA. Procedure NA at night. Obtain local altimeter setting on CTAF; when not received, use Tri-Cities altimeter setting and increase all MDA 120 feet, increase LP Cat C visibility $\frac{3}{4}$ SM, LNAV Cat B visibility $\frac{1}{4}$ SM, Cat C visibility $\frac{3}{4}$ SM, and increase Circling Cat B visibility $\frac{1}{4}$ SM. Rwy 7, 25 helicopter visibility reduction below 1 SM NA.

MISSED APPROACH:
Climb to 4300 direct
JISRA and hold.

TRI CITY APP CON ★
128.05 317.5

UNICOM
122.8 (CTAF)



ELEV 1255		TDZE 1254
-----------	--	-----------

