

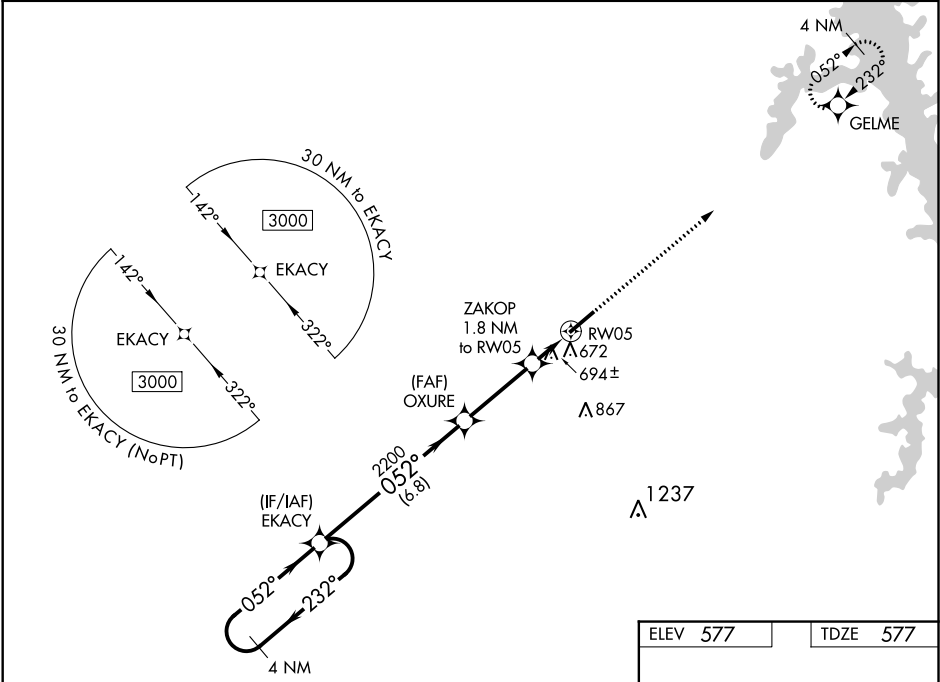
WAAS CH 86826 W05A	APP CRS 052°	Rwy Idg TDZE Apt Elev	6202 577 577
----------------------------------------	------------------------	-----------------------------	-----------------------------------------

RNAV (GPS) RWY 5
KYLE-OAKLEY FIELD (CEY)

⚠ When local altimeter setting not received use Mayfield altimeter setting: increase all DA/MDA 40 feet, and increase LPV, LNAV/VNAV all Cats, and LNAV Cats C and D visibility 1/8 mile. For uncompensated Baro-VNAV systems, LNAV/VNAV NA below -16°C (4°F) or above 54°C (130°F). DME/DME RNP-0.3 NA. Helicopter visibility reduction below 3/4 SM NA. VDP and Baro-VNAV NA when using Mayfield altimeter setting.

MISSED APPROACH: Climb to 3000 direct GELME and hold.

AWOS-3 119.975	MEMPHIS CENTER 133.65 292.15	UNICOM 122.7 (CTAF) 0
--------------------------	----------------------------------------	---------------------------------



4 NM Holding Pattern

VGSI and RNAV glidepath not coincident (VGSI Angle 3.00/TCH 29).

3000 GELME

GP 3.00° TCH 40

2200 *1180

6.8 NM 3.2 NM 0.7 NM 1.1 NM

CATEGORY	A	B	C	D
LPV DA		827-7/8	250 (300-7/8)	
LNAV/VNAV DA		871-1	294 (300-1)	
LNAV MDA	960-1	383 (400-1)	960-1 1/8	383 (400-1 1/8)
C CIRCLING	1000-1 423 (500-1)	1040-1 463 (500-1)	1040-1 1/2 463 (500-1 1/2)	1180-2 603 (700-2)

ELEV 577 TDZE 577

052° to RW05

6002 X 100

MIRL Rwy 5-23 0

REIL Rwy 5 and 23 0

SE-1, 03 DEC 2020 to 31 DEC 2020

SE-1, 03 DEC 2020 to 31 DEC 2020