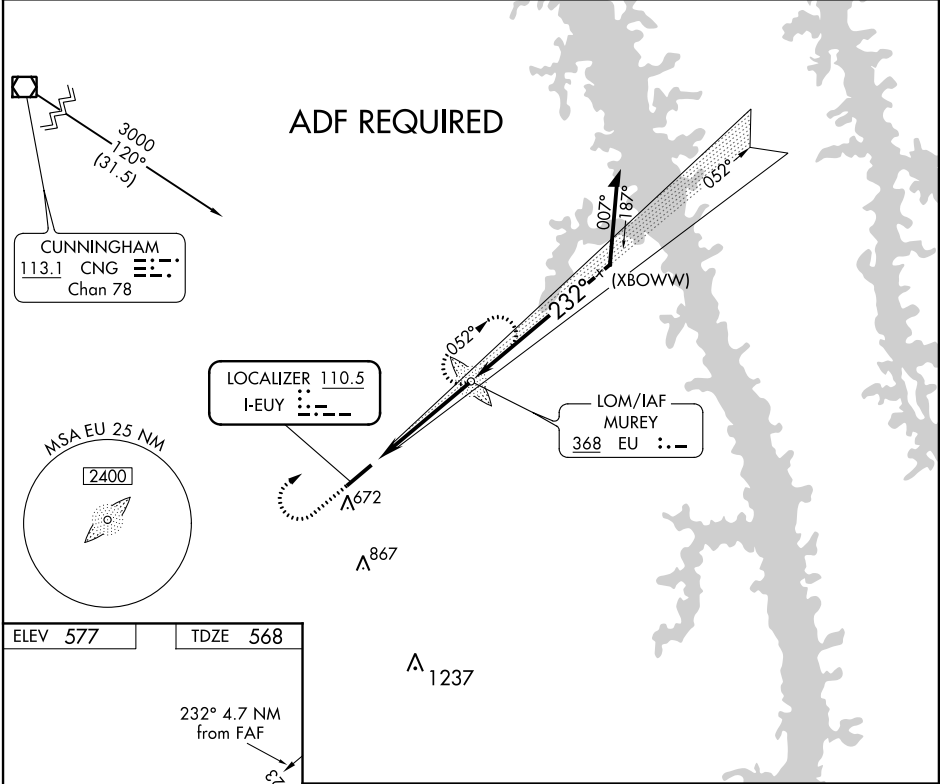


LOC I-EUY 110.5	APP CRS 232°	Rwy Idg TDZE Apt Elev	6202 568 577
---------------------------	------------------------	-----------------------------	---




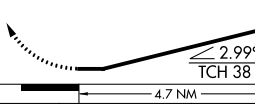

LOC RWY 23
KYLE-OAKLEY FIELD (CEY)

⚠ NA Rwy 23 helicopter visibility reduction below ¾ SM NA. ADF required. When local altimeter setting not received use Mayfield altimeter setting: increase all MDA 40 feet and increase S-23 Cats C and D visibility ½ mile. For inop ODALS, increase S-23 Cats C and D visibility ¼ mile.	ODALS 	MISSED APPROACH: Climb to 1200 then climbing right turn to 2100 direct MUREY LOM and hold.
--	------------------	---

AWOS-3 119.975	MEMPHIS CENTER 133.65 292.15	UNICOM 122.7 (CTAF) 1
---------------------------------	---	--



ELEV 577	TDZE 568
232° 4.7 NM from FAF	
6202 X 100	
REIL Rws 5 and 23 1	
MIRL Rwy 5-23 1	
FAF to MAP 4.7 NM	
Knots	60 90 120 150 180
Min:Sec	4:42 3:08 2:21 1:53 1:34

1200	2100	EU		
				
VGSI and descent angles not coincident (VGSI Angle 3.50/TCH 38).				
				
EU LOM				
Remain within 10 NM				
2200				
232°				
2100				
2.99° TCH 38				
4.7 NM				
CATEGORY	A	B	C	D
S-23	980-¾	412 (500-¾)	980-1	412 (500-1)
 CIRCLING	1000-1 423 (500-1)	1040-1 463 (500-1)	1040-1½ 463 (500-1½)	1180-2 603 (700-2)

SE-1, 03 DEC 2020 to 31 DEC 2020

SE-1, 03 DEC 2020 to 31 DEC 2020