

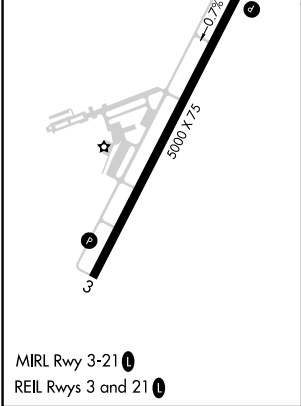
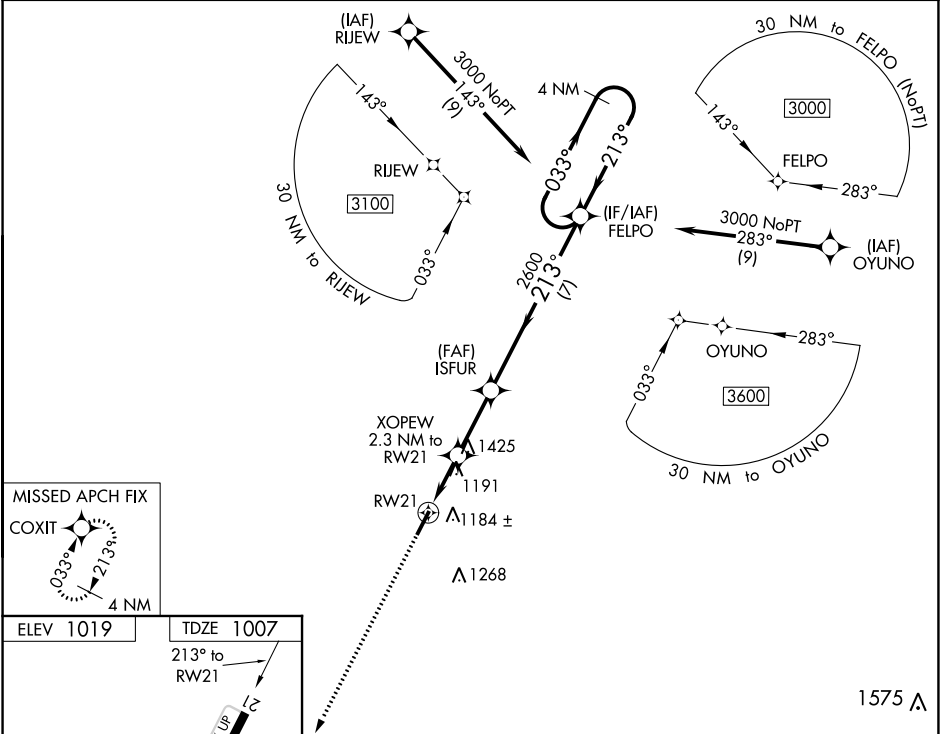
WAAS CH <b>42830</b> <b>W21A</b>	APP CRS <b>213°</b>	Rwy Idg TDZE Apt Elev	<b>5000</b> <b>1007</b> <b>1019</b>
--	------------------------	-----------------------------	---

RNAV (GPS) RWY 21

MOUNT STERLING-MONTGOMERY COUNTY (IOB)

<p><b>▼</b> For uncompensated Baro-VNAV systems, LNAV/VNAV NA below -17°C (2°F) or above 54°C (130°F). DME/DME RNP-0.3 NA. When local altimeter setting not received, use Lexington altimeter setting and increase all DA/MDA 80 feet and all visibilities ¼ mile. Baro-VNAV and VDP NA when using Lexington altimeter setting. Helicopter visibility reduction below ¾ SM NA.</p>	<p><b>MISSED APPROACH:</b> Climb to 3000 direct COXIT and hold.</p>
--	---

AWOS-3 <b>120.675</b>	LEXINGTON APP CON <b>120.15 259.3</b>	GCO <b>121.72</b>	UNICOM <b>122.8 (CTAF) 0</b>
--------------------------	--	----------------------	---------------------------------



1575 <b>▲</b>			
3000 <b>▲</b> COXIT			
*LNAV only.			
RW21 1760* 2600 3000			
1.3 NM 1 NM 2.6 NM 7 NM			
CATEGORY	A	B	C
LPV DA	1257-¾	250 (300-¾)	
LNAV/VNAV DA	1480-1½	473 (500-1½)	
LNAV MDA	1460-1	453 (500-1)	1460-1½ 453 (500-1½)
<b>C</b> CIRCLING	1540-1 521 (600-1)	1560-1 541 (600-1)	1740-2 721 (800-2) 1740-2¼ 721 (800-2¼)