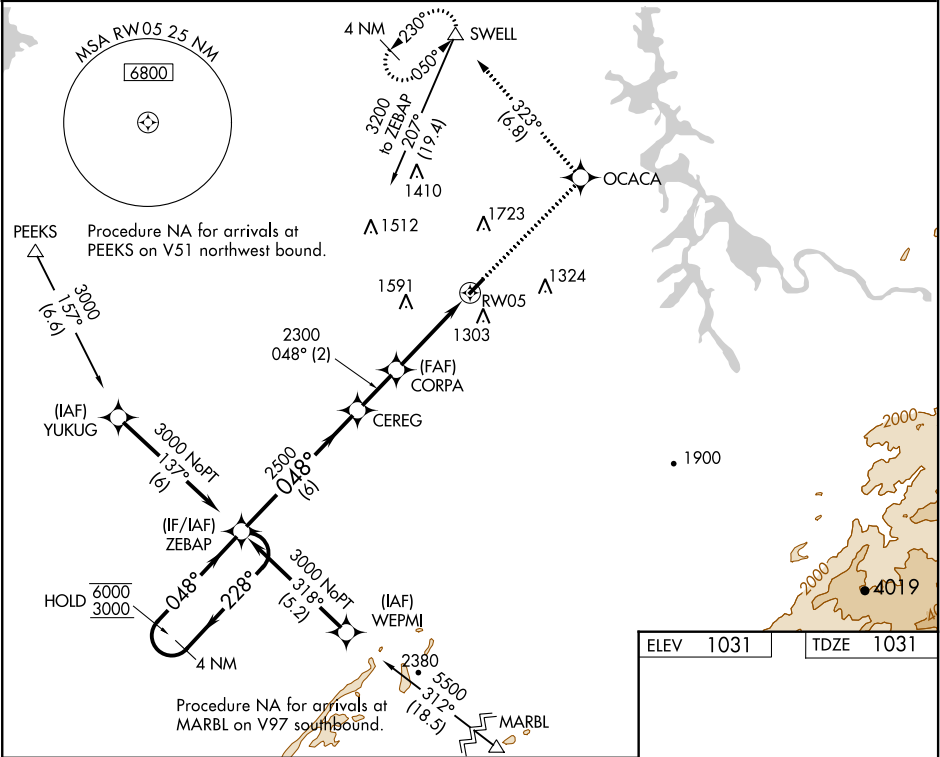


WAAS CH 99531 W05A	APP CRS 048°	Rwy Idg TDZE Apt Elev 3643 1031 1031
--	------------------------	--

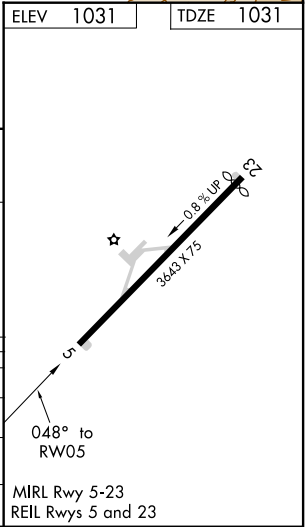
RNAV (GPS) RWY 5
MONROE COUNTY (MNV)

RNP APCH.	MISSED APPROACH: Climb to 3200 direct OCACA and track 323° to SWELL and hold.
-----------	--

AWOS-3 118.475	KNOXVILLE APP CON 123.9 353.6	UNICOM 123.0 (CTAF)
--------------------------	---	-------------------------------



4 NM Holding Pattern		ZEBAP	CEREG	CORPA	RW05
6000	← 228°	← 048°	← 048°	2500	2300
3000					
GP 3.00° TCH 53					
VGSi and RNAV glidepath not coincident (VGSi Angle 3.00/TCH 20).					
CATEGORY	A	B	C	D	
LPV DA	1395-1 1/8	364 (400-1 1/8)		NA	
LNNAV/VNAV	1538-1 3/4	507 (600-1 3/4)		NA	
LNNAV MDA	1680-1 649 (700-1)	1680-1 649 (700-1 1/8)		NA	
CIRCLING	1680-1 649 (700-1)	1680-2 649 (700-2)		NA	



SE-1, 03 DEC 2020 to 31 DEC 2020

SE-1, 03 DEC 2020 to 31 DEC 2020