

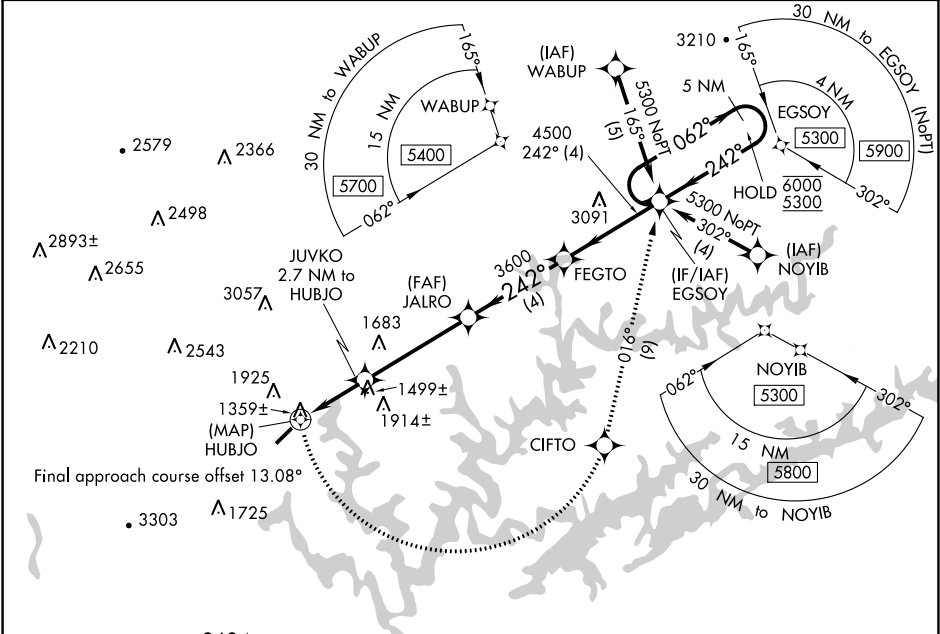
WAAS CH 77736 W23A	APP CRS 242°	Rwy Idg TDZE Apt Elev	4000 1180 1180
--	------------------------	-----------------------------	---

RNAV (GPS) RWY 23

COLONEL TOMMY C STINER AIRFIELD (JAU)

RNP APCH. ▼ Circling NA northwest of Rwy 5-23. Rwy 23 helicopter visibility reduction below ¾ SM NA.	MISSED APPROACH: Climbing left turn to 5300 direct CIFTO and on track 016° to EGSOY and hold, continue climb-in-hold to 5300.
--	--

AWOS-3 124.975	ATLANTA CENTER 133.6 254.3	UNICOM 122.8 (CTAF) 0
--------------------------	--------------------------------------	---------------------------------



ELEV 1180

TDZE 1180

The diagram shows the runway layout and the missed approach procedure. It includes the runway axis, the missed approach climb-in-hold, and the final approach segment. The runway is labeled with its identifier and the missed approach procedure is described with a diagram showing the climb-in-hold and the final approach segment.

5300	CIFTO	tr 016°	EGSOY	Visual Segment - Obstacles.																									
<table><tr><td>0.5</td><td>1.4</td><td>1.3</td><td>4.3 NM</td><td>4 NM</td></tr><tr><td>CATEGORY</td><td>A</td><td>B</td><td>C</td><td>D</td></tr><tr><td>LP MDA</td><td>1640-1</td><td>460 (500-1)</td><td colspan="2">NA</td></tr><tr><td>LNAV MDA</td><td>1920-1</td><td>740 (800-1)</td><td colspan="2">NA</td></tr><tr><td>CIRCLING</td><td>1920-1</td><td>740 (800-1)</td><td colspan="2">NA</td></tr></table>					0.5	1.4	1.3	4.3 NM	4 NM	CATEGORY	A	B	C	D	LP MDA	1640-1	460 (500-1)	NA		LNAV MDA	1920-1	740 (800-1)	NA		CIRCLING	1920-1	740 (800-1)	NA	
0.5	1.4	1.3	4.3 NM	4 NM																									
CATEGORY	A	B	C	D																									
LP MDA	1640-1	460 (500-1)	NA																										
LNAV MDA	1920-1	740 (800-1)	NA																										
CIRCLING	1920-1	740 (800-1)	NA																										

MIRL Rwy 5-23 0

REIL Rwy 5 and 23 0