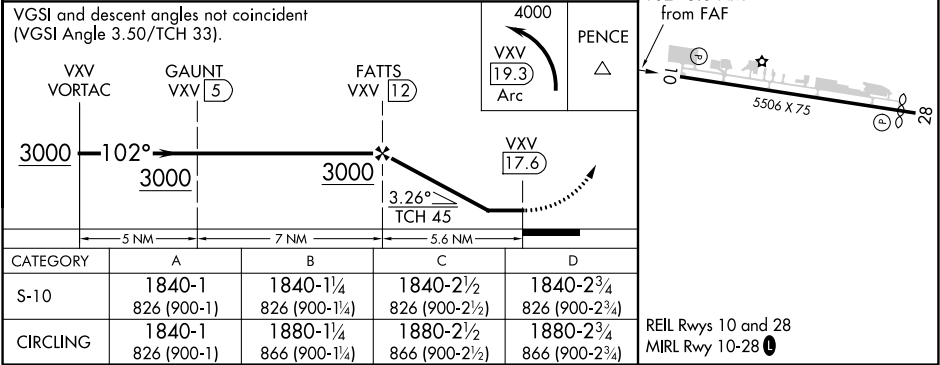
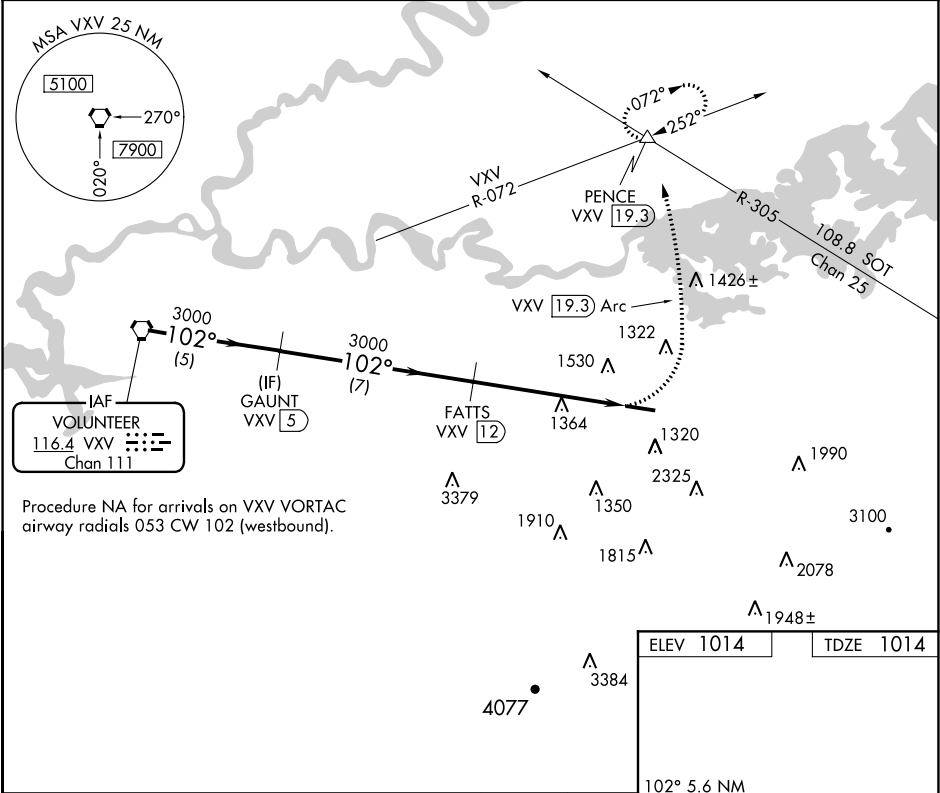


VORTAC VXV	APP CRS	Rwy Idg	5506
116.4	102°	TDZE	1014
Chan 111		Apt Elev	1014

VOR/DME RWY 10  
GATLINBURG-PIGEON FORGE (GKT)

<p><b>NA</b></p> <p>Procedure NA at night. Helicopter visibility reduction below 1 SM NA. When local altimeter setting not received, use Mc Ghee Tyson altimeter setting and increase all MDA 60 feet and increase S-18 and Circling Cats A,C and D visibilities 1/4 mile.</p>	<p>MISSED APPROACH: Climbing left turn to 4000 on VXV VORTAC 19.3 DME CCW Arc to PENCE INT/VXV 19.3 DME and hold, continue climb-in-hold to 4000.</p>
--	---

AWOS-3 126.875	KNOXVILLE APP CON 132.8 360.8	UNICOM 123.0 (CTAF) 0
-------------------	----------------------------------	--------------------------



SE-1, 03 DEC 2020 to 31 DEC 2020

SE-1, 03 DEC 2020 to 31 DEC 2020