

WAAS CH 61017 W02A	APP CRS 015°	Rwy Idg TDZE 978 Apt Elev 984	5500
--	------------------------	---	-------------

RNAV (GPS) RWY 2

FAYETTEVILLE MUNI (FYM)

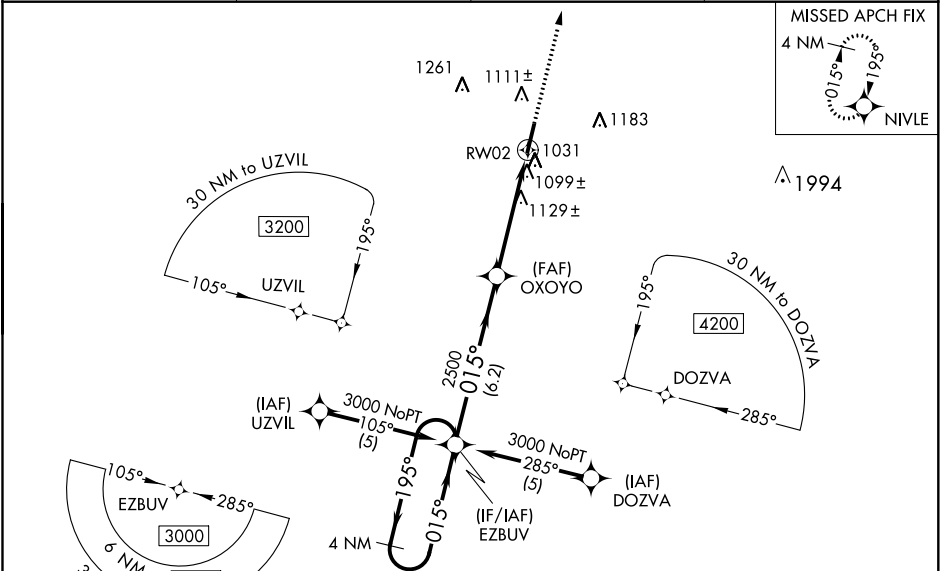
▼

▲ NA

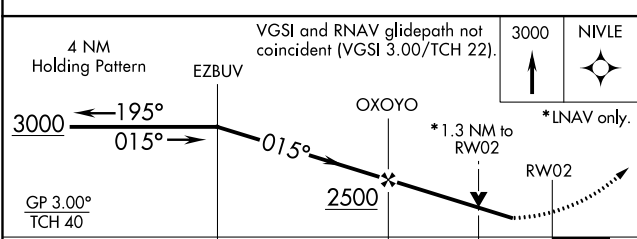
Baro-VNAV NA when using Huntsville altimeter setting. For uncompensated Baro-VNAV systems, LNAV/VNAV NA below -16°C (4°F) or above 46°C (114°F). DME/DME RNP-0.3 NA. Visibility reduction by helicopters NA. When local altimeter setting not received use Huntsville altimeter setting and increase all DA 113 feet and all MDA 120 feet; increase LPV all Cats, LNAV Cat C and Circling Cat D visibility ¼ mile and LNAV/VNAV all Cats and LNAV Cat D visibility ½ mile. VDP NA when using Huntsville altimeter setting.

MISSED APPROACH:
Climb to 3000 direct NIVLE and hold.

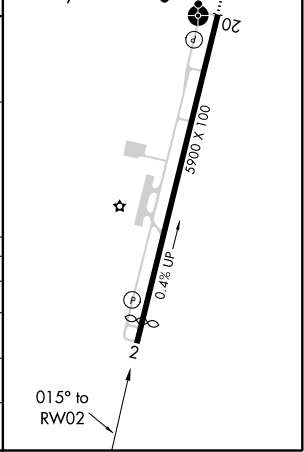
AWOS-3 135.275	HUNTSVILLE APP CON ★ 125.6 354.1	CLNC DEL (GCO) 121.725	UNICOM 122.8 (CTAF) 0
--------------------------	--	----------------------------------	---------------------------------



ELEV 984	TDZE 978
MIRL Rwy 2-20 0	REIL Rwy 2 and 20 0



CATEGORY	A	B	C	D
LPV DA	1228-1	250 (300-1)		
LNAV/VNAV DA	1406-1½	428 (500-1½)		
LNAV MDA	1380-1	402 (400-1)	1380-1¼	402 (400-1¼)
CIRCLING	1420-1 436 (500-1)	1440-1 456 (500-1)	1440-1½ 456 (500-1½)	1540-2 556 (600-2)



SE-1, 03 DEC 2020 to 31 DEC 2020

SE-1, 03 DEC 2020 to 31 DEC 2020