

▼

▲ NA

Night landing: Rwy 19 NA. DME/DME RNP-0.3 NA. Helicopter visibility reduction below ¾ SM NA. Obtain local altimeter setting on CTAf; when not received use McKellar-Sipes Rgnl altimeter setting and increase all MDA 60 feet, increase Circling Cat C visibility ¼ mile.

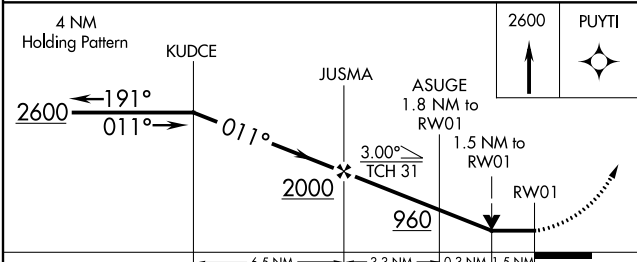
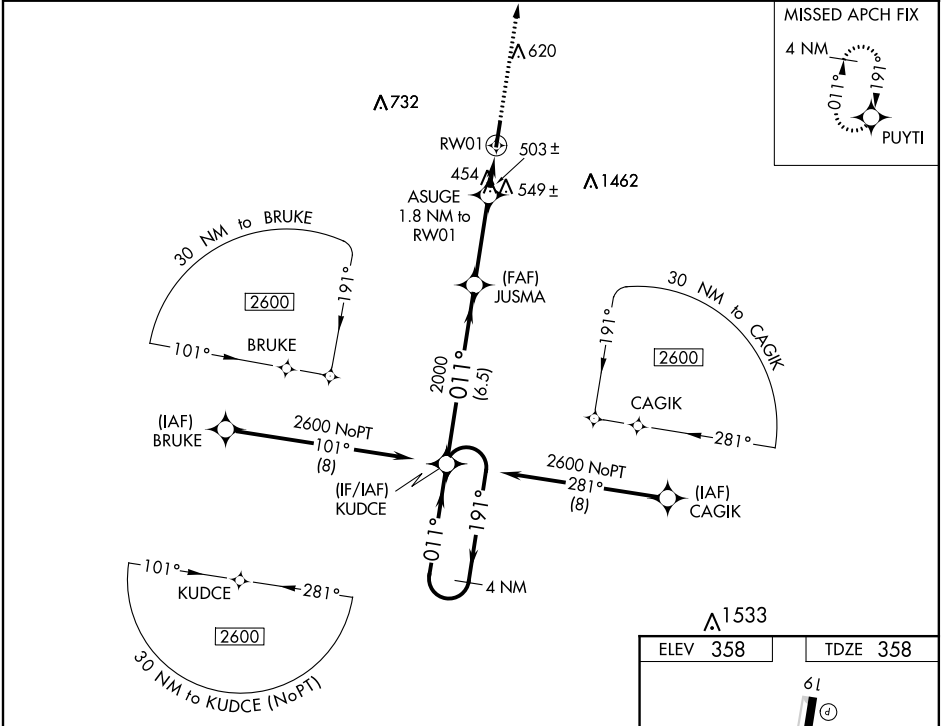
MISSED APPROACH: Climb to 2600 direct PUYTI and hold.

MEMPHIS CENTER

134.65 316.15

UNICOM

122.8 (CTAF)



CATEGORY	A	B	C	D
LP MDA	720-1 362 (400-1)			
LPNAV MDA	800-1 442 (500-1)		800-1¾ 442 (500-1¾)	
● CIRCLING	980-1 622 (700-1)		980-1¾ 622 (700-1¾)	
			1780-3 1422 (1500-3)	

