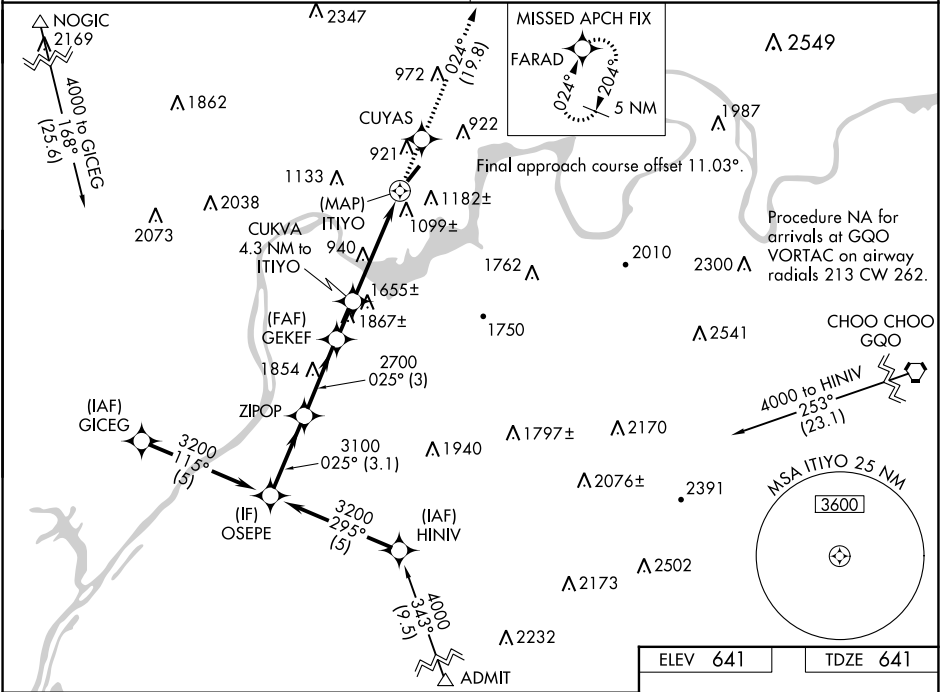


|         |          |      |
|---------|----------|------|
| APP CRS | Rwy Idg  | 3498 |
| 025°    | TDZE     | 641  |
|         | Apt Elev | 641  |

RNAV (GPS) RWY 4  
MARION COUNTY-BROWN FIELD (APT)

|   |   |
|---|---|
| <p><b>NA</b></p> <p>DME/DME RNP-0.3 NA. Obtain local altimeter setting on CTAF; when not received, use Chattanooga altimeter setting. Rwy 4, 22 helicopter visibility reduction below 1 SM NA. Procedure NA at night.</p> | <p>MISSED APPROACH: Climb to 4000 direct CUYAS and on track 024° to FARAD and hold.</p> |
|---|---|

|  |                        |
|--|------------------------|
| CHATTANOOGA APP CON ★<br>119.2 323.075 | UNICOM<br>122.8 (CTAF) |
|--|------------------------|



|  |                          |                           |                         |      |       |         |       |
|--|--------------------------|---------------------------|-------------------------|------|-------|---------|-------|
| Visual Segment - Obstacles.            |                          |                           |                         | 4000 | CUYAS | tr 024° | FARAD |
|  |                          |                           |                         |      |       |         |       |
| CATEGORY                               | A                        | B                         | C                       | D    |       |         |       |
| LNAV MDA                               | 1500-1<br>859 (900-1)    | 1500-1¼<br>859 (900-1¼)   | 1500-2½<br>859 (900-2½) | NA   |       |         |       |
| CIRCLING                               | 1560-1¼<br>919 (1000-1¼) | 1840-1½<br>1199 (1200-1½) | 1860-3<br>1219 (1300-3) | NA   |       |         |       |
| CHATTANOOGA ALTIMETER SETTING MINIMUMS |                          |                           |                         |      |       |         |       |
| LNAV MDA                               | 1540-1¼<br>899 (900-1¼)  | 1540-2¾<br>899 (900-2¾)   | 1920-3<br>1279 (1300-3) | NA   |       |         |       |
| CIRCLING                               | 1620-1¼<br>979 (1000-1¼) | 1900-1½<br>1259 (1300-1½) | 1920-3<br>1279 (1300-3) | NA   |       |         |       |

