

APP CRS

055°

Rwy Idg

5600

TDZE

670

Apt Elev

681

RNAV (GPS) RWY 6

MAURY COUNTY (MRC)

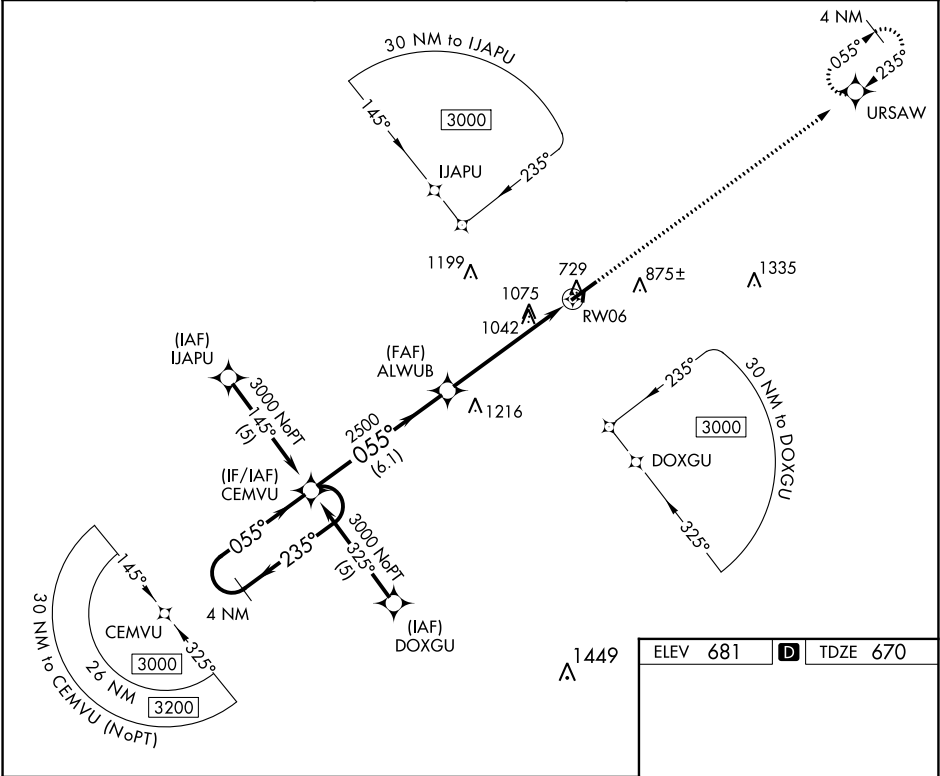
▼

▲

DME/DME RNP-0.3 NA. Visibility reduction by helicopters NA. When local altimeter setting not received, use Nashville Intl. altimeter setting and increase all MDA 120 feet and increase LNAV Cat B visibility ¼ mile, Cats C and D visibility ½ mile, increase Circling Cat B visibility ¼ mile, Cats C and D visibility ½ mile.

MISSED APPROACH:  
Climb to 3000 direct  
URSAW and hold.

AWOS-3 128.625	MEMPHIS CENTER 125.85 379.25	UNICOM 122.8 (CTAF) 0
-------------------	---------------------------------	--------------------------



4 NM Holding Pattern

3000

235°

055°

CEMVU

VGSI and descent angles not coincident (VGSI Angle 3.00/TCH 42).

3000

URSAW

ALWUB

2500

055°

3.05°

TCH 40

RW06

6.1 NM

5.6 NM

CATEGORY	A	B	C	D
LNAV MDA	1340-1	670 (700-1)	1340-1¾ 670 (700-1¾)	1340-2 670 (700-2)
CIRCLING	1340-1	659 (700-1)	1380-2 699 (700-2)	1380-2¾ 699 (700-2¾)

ELEV 681

TDZE 670

MIRL Rwy 6-24

REIL Rwy 6

REIL Rwy 24 0