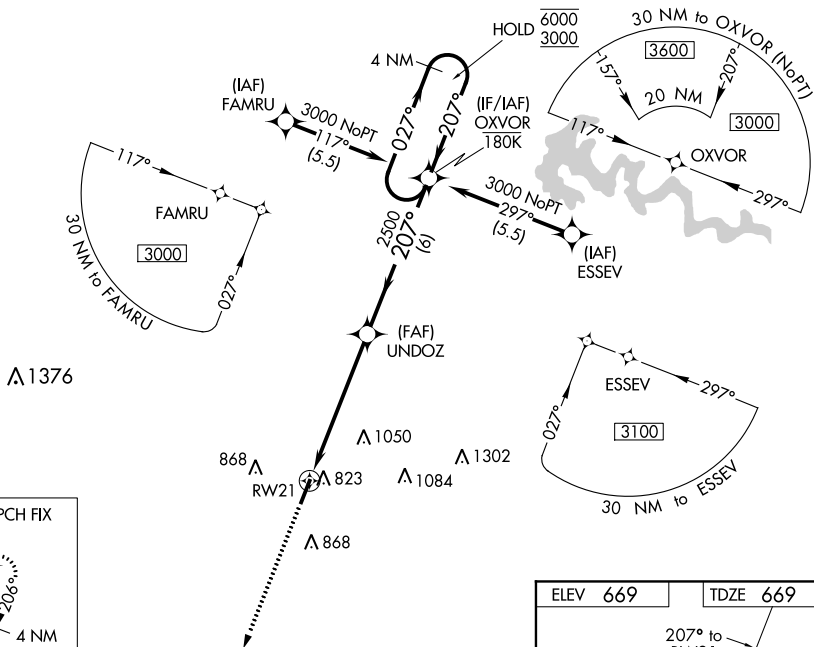


RNAV (GPS) RWY 21
SAMUELS FIELD (BRY)

MISSED APPROACH:
Climb to 3100 direct
MAKRZ and hold.

UNICOM
122.8 (CTAF) **L**



A schematic diagram of a nanowire structure. It shows a central cylindrical section with a diameter of 4 nm. This central section is flanked by two tapered regions. The left tapered region has a taper angle of 26°, and the right tapered region has a taper angle of 206°. The tapered regions are represented by dashed lines indicating the tapering profile.

3100
↑
MAKRZ

VGS and RNAV glidepath not coincident
(VGS Angle 3.00/TCH 28).

4 NM
Holding Pattern

OXVOR

UNDOZ

2500

207°

2500

207°

6000

3000

GP 3.00°
TCH 40

RW21


1.5 NM

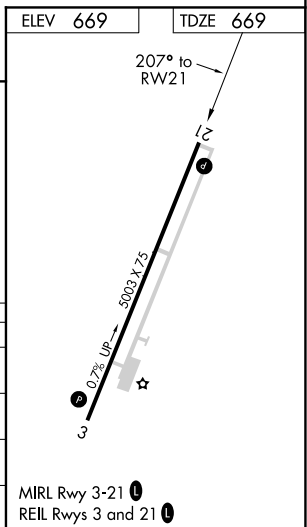
4.1 NM

6 NM

*LNAV only.

*1.5 NM to RW21

CATEGORY		A	B	C	D
LPV	DA	919- ³ / ₄ 250 (300- ³ / ₄)			
LNAV/ VNAV	DA	1051-1 ¹ / ₈ 382 (400-1 ¹ / ₈)			
LNAV	MDA	1180-1 511 (600-1)		1180-1 ³ / ₈ 511 (600-1 ³ / ₈)	
 CIRCLING		1200-1 531 (600-1)	1260-1 591 (600-1)	1360-2 691 (700-2)	1480-2 ³ / ₄ 811 (900-2 ³ / ₄)



SE-1, 03 DEC 2020 to 31 DEC 2020