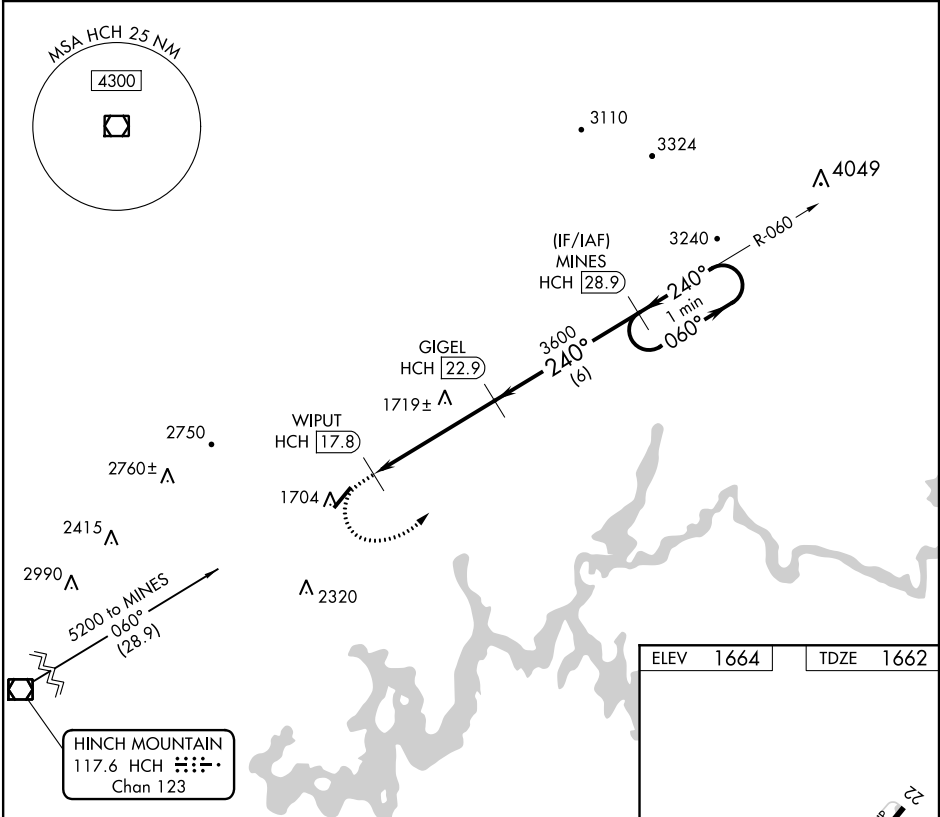


VOR/DME HCH	APP CRS	Rwy Idg	5000
117.6	240°	TDZE	1662
Chan 123		Apt Elev	1664

VOR/DME RWY 22
ROCKWOOD MUNI (RKW)

<p>⚠ Circling Rwy 4 NA at night. When local altimeter setting not received, use Crossville altimeter setting and increase all MDA 80 feet, and S-22 Cats C/D and Circling Cat D visibility ¼ SM.</p>	<p>MISSED APPROACH: Climb to 2400 then climbing left turn to 5200 on heading 020° and HCH R-060 to MINES 28.9 DME and hold.</p>
-------------------------------------------------------------------------------------------------------------------------------------------------------------------------------------------------------------	----------------------------------------------------------------------------------------------------------------------------------------

AWOS-3 118.775	ATLANTA CENTER 133.6 254.3	UNICOM 122.8 (CTAF) 📻
-------------------	-------------------------------	---------------------------------



2400	5200	HCH R-060	MINES HCH 28.9	One Minute Holding Pattern
hdg 020°				
WIPUT HCH 17.8	GIGEL HCH 22.9	MINES HCH 28.9		
3600	2400	5200		
3.00° TCH 40		060°		
		240°		
		5200		
		VGSI and descent angles not coincident (VGSI Angle 3.00/TCH 31).		
1 NM	5.1 NM	6 NM		
CATEGORY	A	B	C	D
S-22	2160-1¼ 498 (500-1¼)			2160-1½ 498 (500-1½)
CIRCLING	2160-1¼ 496 (500-1¼)	2180-1½ 516 (600-1½)		2260-2 596 (600-2)

