

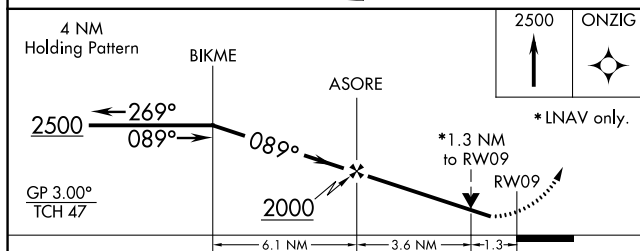
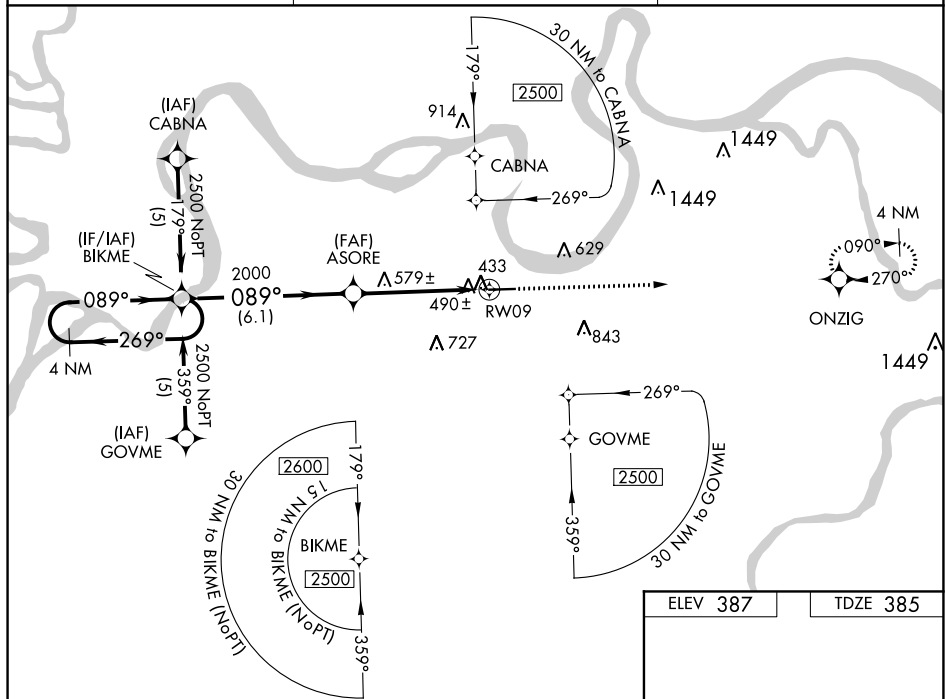
RNAV (GPS) RWY 9

HENDERSON CITY-COUNTY (EHR)

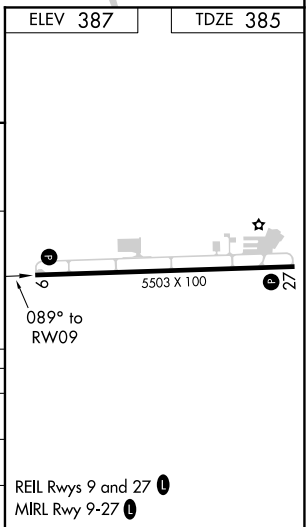
T For uncompensated Baro-VNAV systems, LNAV/VNAV NA below -15°C or above 48° C.
A Rwy 9 helicopter visibility reduction below ¾ SM NA. Baro-VNAV and VDP NA when using Evansville altimeter setting. When local altimeter setting not received, use Evansville altimeter setting and increase all DA 41 feet and all MDA 60 feet and LPV all Cats, LNAV/VNAV all Cats and LNAV Cats C/D visibilities ¼ mile.

MISSED APPROACH:
Climb to 2500 direct
ONZIG and hold.

AWOS-3PT 118.85	EVANSVILLE APP CON ★ 124.025 257.8	UNICOM 122.8 (CTAF) 0
---------------------------	--	--



CATEGORY	A	B	C	D
LPV DA	694-1 309 (400-1)			
LNAV/ VNAV DA	774-1¼ 389 (400-1¼)			
LNAV MDA	840-1 455 (500-1)		840-1⅜ 455 (500-1⅜)	840-1½ 455 (500-1½)



SE-1, 03 DEC 2020 to 31 DEC 2020