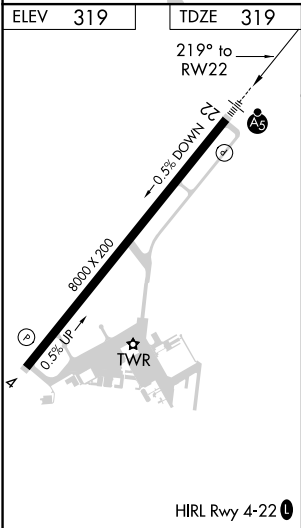
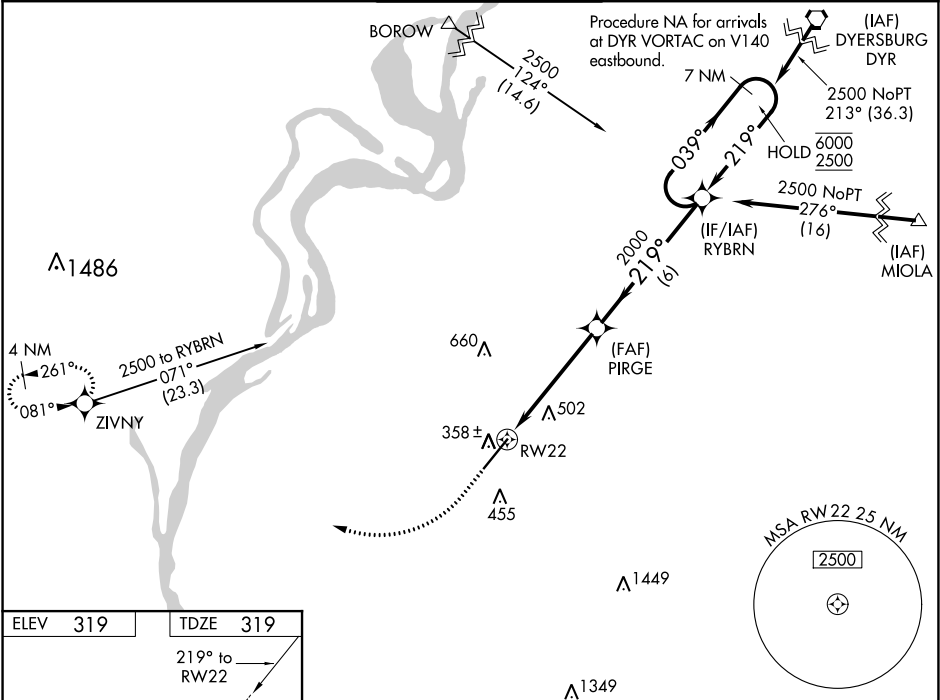





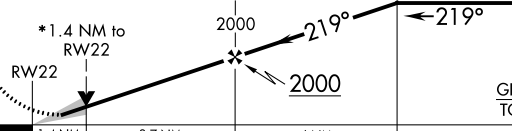

WAAS CH 86212 W22A	APP CRS 219°	Rwy Idg TDZE 319 Apt Elev 319
--	------------------------	---

RNAV (GPS) RWY 22
MILLINGTON-MEMPHIS (NQA)

RNP APCH. ▼ For uncompensated Baro-VNAV systems, LNAV/VNAV NA below -15°C or above 54°C. ▲ For inop ALS, increase LNAV/VNAV all Cats visibility to 1 3⁄8 SM, and LNAV Cat A/B visibility to 1 SM and Cat E visibility to 1 1⁄2 SM. Inop table does not apply to LPV.	MALSR 	MISSED APPROACH: Climb to 840 then climbing right turn to 2500 direct ZIVNY and hold.
--	-----------	---

AWOS-3 118.925	MEMPHIS APP CON 119.1 291.6 125.8 338.3 (176°-355°) (356°-175°)	MILLINGTON TOWER ★ 120.25 (CTAF) 0 340.2	GND CON 121.375	UNICOM 122.95
--------------------------	---	--	---------------------------	-------------------------



840	2500	ZIVNY	VGSI and RNAV glidepath not coincident (VGSI Angle 3.00/TCH 73).			7 NM Holding Pattern
						
*LNAV only.						
						
CATEGORY	A	B	C	D	E	
LPV DA	519-½		200 (200-½)			
LNAV/ VNAV	DA	786-1		467 (500-1)		
LNAV MDA	840-¾	521 (600-¾)	840-1		521 (600-1)	
 CIRCLING	840-1	521 (600-1)	920-1¾ 601 (700-1¾)	960-2 641 (700-2)	960-2¼ 641 (700-2¼)	