

LOC I-MQY <u>111.1</u>	APP CRS 321°	Rwy Idg 8038 TDZE 518 Apt Elev 543
----------------------------------	------------------------	---

ILS or LOC/DME RWY 32
SMYRNA (MQY)

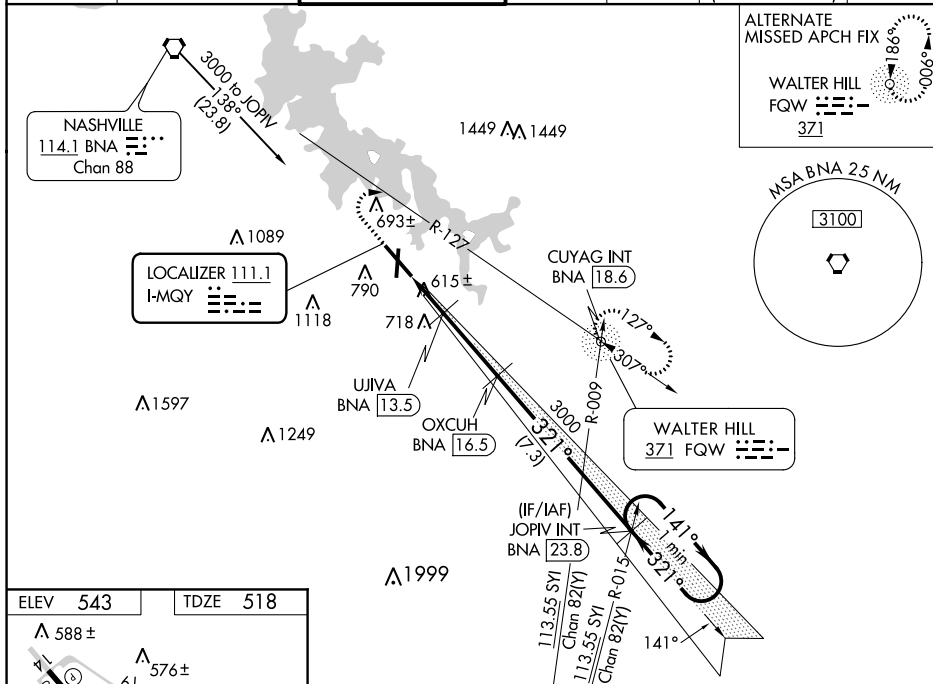
▼ DME from BNA VORTAC, simultaneous reception of I-MQY and BNA DME required. For inop MALSR, increase S-LOC 32 Cats C/D visibility to 1 mile. **▲** For inop MALSR when using Nashville Intl altimeter setting, increase S-LOC 32 Cats C/D visibility $\frac{1}{2}$ mile. When local altimeter setting not received, use Nashville Intl altimeter setting and increase all DA to 749 feet and all MDA 40 feet; increase S-LOC 32 Cats C/D visibility $\frac{1}{2}$ mile and increase Circling Cats C/D visibility $\frac{1}{4}$ mile. VDP NA when using Nashville Intl altimeter setting.

MALSR

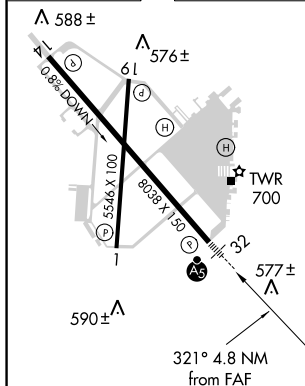


MISSED APPROACH: Climb to 1500 then climbing right turn to 3000 on heading 090° and BNA VORTAC R-127 to CUYAG INT/ BNA VORTAC 18.6 DME and hold.

AWOS-3PT 119.125	NASHVILLE APP CON 118.4 360.7	SMYRNA TOWER ★ 118.5 (CTAF) 0 233.1	GND CON 121.4	CLNC DEL 121.4	CLNC DEL 121.7 (When twr closed)	UNICOM 122.95
----------------------------	---	---	-------------------------	--------------------------	---	-------------------------



ELEV 543	TDZE 518
----------	----------



REIL Rwy 14 **L**
HIRL Rwy 14-32 **L**
MIRL Rwy 1-19 **L**
REIL Rwy 1, 19, and 32

1500 ↑	3000 hdg 090°	BNA R-127	CUYAG BNA 18.6	VGS1 and ILS glidepath not coincident (VGS1 Angle 3.00/TCH 57).			
*LOC only				OXCUH BNA 16.5	JOPIV INT BNA 23.8	One Minute Holding Pattern	
CATEGORY	A		B		C		D
S-ILS 32	718-1½ 200 (200-½)						
S-LOC 32	880-½ 362 (400-½)		880-⅝ 362 (400-⅝)				
CIRCLING	1100-1 557 (600-1)	1200-1 657 (700-1)	1260-2 717 (800-2)	1480-2¾ 937 (1000-2¾)			

SMYRNA (MQY)
ILS or LOC/DME RWY 32