

VOR/DME OWB

**108.6**

Chan **23**

APP CRS

**176°**

Rwy Idg

**8000**

TDZE

**407**

Apt Elev

**407**

OWENSBORO-DAVIESS COUNTY RGNL (OWB)

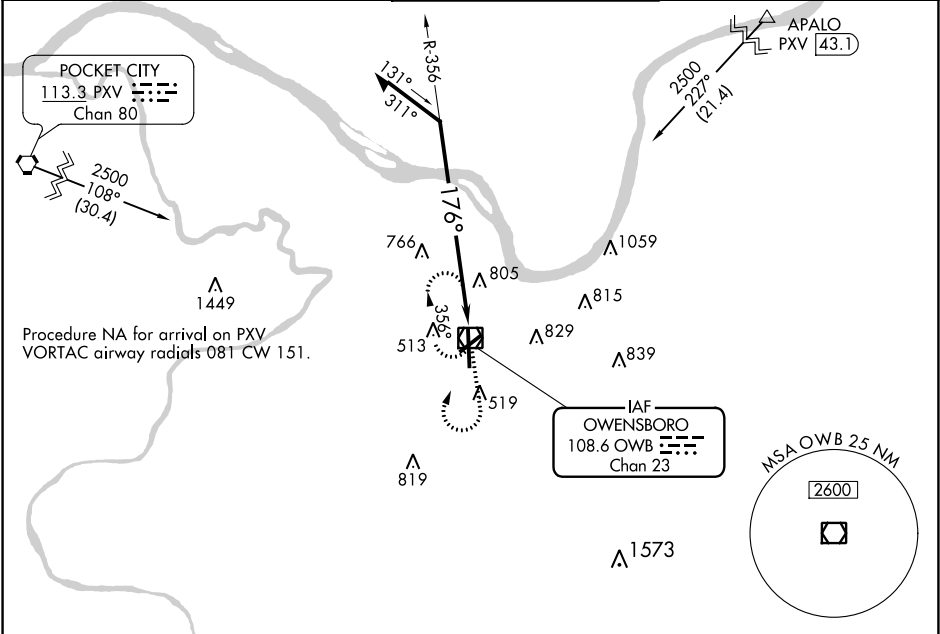
**VOR RWY 18**

T

A

MISSED APPROACH: Climb to 2500 then right turn direct OWB VOR/DME and hold.

AWOS-3PT	EVANSVILLE APP CON *	OWENSBORO TOWER *	GND CON	UNICOM
<b>119.025</b>	<b>124.025 290.9</b>	<b>120.7 (CTAF) 0 251.15</b>	<b>121.7</b>	<b>122.95</b>



Remain within 10 NM

2500

356°

176°

OWB VOR/DME

OWB 2.4

2.1 NM

2500

OWB

CATEGORY	A	B	C	D
S-18	1120-1	713 (800-1)	1120-2	713 (800-2)
CIRCLING	1120-1	713 (800-1)	1140-2 733 (800-2)	1140-2 1/4 733 (800-2 1/4)

ELEV 407

D

TDZE 407

176° to OWB VOR/DME

81

425 TWR

486

466

5000 X 100

36

A5

MIRL Rwy 6-24

HIRL Rwy 18-36

REIL Rwy 6, 18, and 24

OWENSBORO, KENTUCKY

OWENSBORO-DAVIESS COUNTY RGNL (OWB)

Amdt 10B 26MAR20

37°44'N-87°10'W

**VOR RWY 18**