

RNAV (GPS) RWY 23

WAAS Chan 56203 W23A	APCH CRS 225°	Rwy Idg 10,926 TDZE 571 Arprt Elev 571
--	-------------------------	---

AL-679 [USA]

CAMPBELL AAF (KHOP)

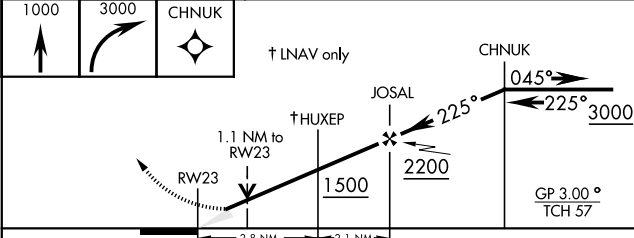
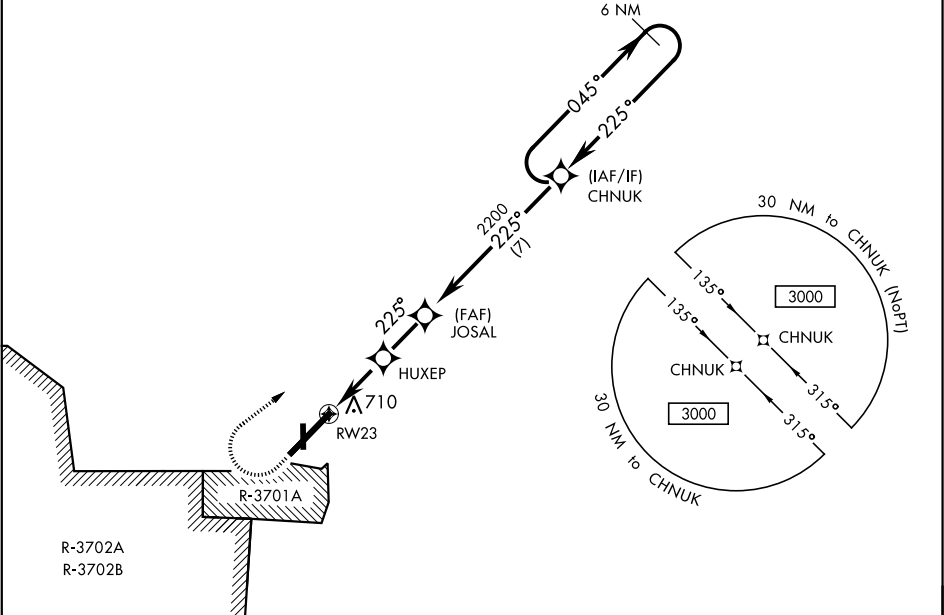
▽ * When ALS inop, increase CAT E RVR to 40.
** When ALS inop, increase CAT E RVR to 50.
*** When ALS inop, increase CAT E RVR to 60.



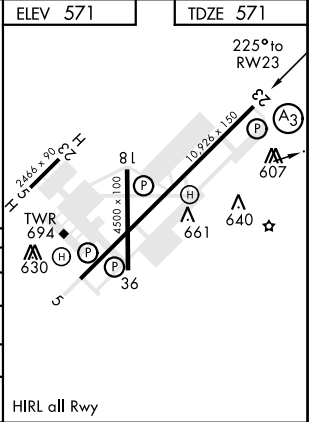
MISSED APPROACH: Climb to 1000 then climbing right turn to 3000 direct CHNUK and hold.

ATIS 125.175 308.4	CAMPBELL APP CON 118.1 269.525	CAMPBELL TOWER 120.9 278.8	GND CON 121.8 266.8	CLNC DEL 138.8	ASR/PAR
------------------------------	--	--------------------------------------	-------------------------------	--------------------------	---------

**** Circling NA SE of Rwy 5-23.
DME/DME RNP-0.3 NA.
For uncompensated BARO-VNAV systems,
LNAV/VNAV NA below -19°C (-2°F) or
above 54°C (130°F).



CATEGORY	A	B	C	D	E
LPV DA *	771/24		200	(200-½)	
LNAV/DA **	891/24		320	(400-½)	
LNAV MDA ***	960/24	389 (400-½)	960/35 389 (400-¾)		
**** CIRCLING	1060-1	489 (500-1)	1060-1½ 489 (500-1½)	1140-2	569 (600-2)



RNAV (GPS) RWY 23

SE-1, 03 DEC 2020 to 31 DEC 2020

SE-1, 03 DEC 2020 to 31 DEC 2020