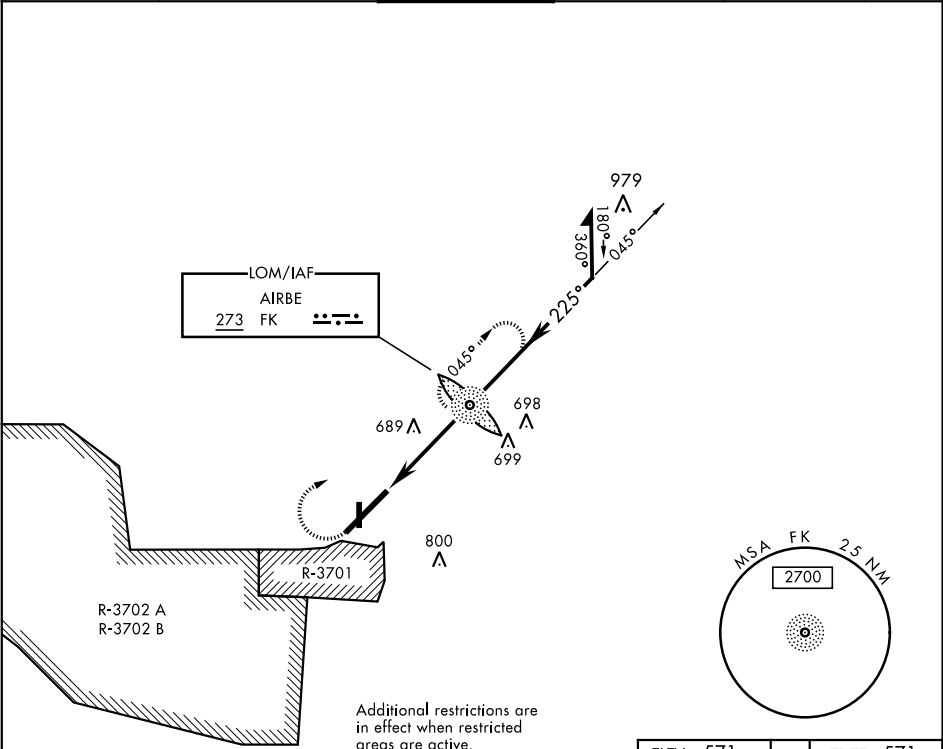
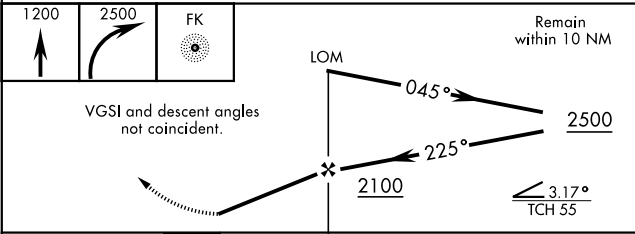


NDB FK 273		APCH CRS 225°		Rwy ldg 10,926 TDZE 571 Arpt Elev 571		AL-679 [USA]		CAMPBELL AAF (KHOP)		
<div><div><div></div><div></div><div></div></div><div>* When ALS inop, increase CAT AB RVR to 50. ** Circling not authorized SE of Rwy 5-23.</div></div>						<div><div>SSALR</div><div><div>A3</div><div></div></div></div>		MISSED APPROACH: Climb to 1200, then climbing right turn to 2500 direct to FK LOM and hold.		
ATIS 125.175 308.4		CAMPBELL APP CON 118.1 269.525		CAMPBELL TOWER 120.9 278.8		GND CON 121.8 266.8		CLNC DEL 138.8		ASR/PAR



RADAR REQUIRED
(for procedure entry)



		← 4.4 NM →								
CATEGORY	A	B	C	D			HIRL all Rwy			
S-23*	1120/40	549 (600-¾)	1120/60	549 (600-1)						
CIRCLING**	1120-1	549 (600-1)	1120-1½ 549 (600-1½)	1140-2 569 (600-2)						
					FAF to MAP 4.4 NM					
					Knots	60	90	120	150	180
					Min:Sec	4:24	2:56	2:12	1:46	1:28