

WAAS CH 42709	APP CRS 004°	Rwy Idg 10000 TDZE 896 Apt Elev 896
-------------------------	------------------------	--

RNAV (GPS) Y RWY 36R

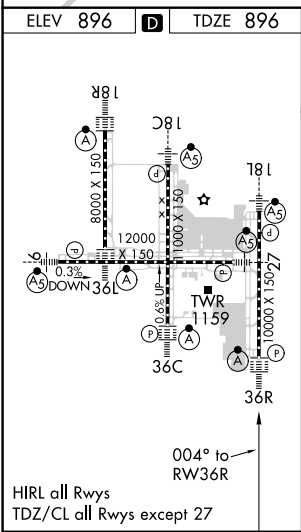
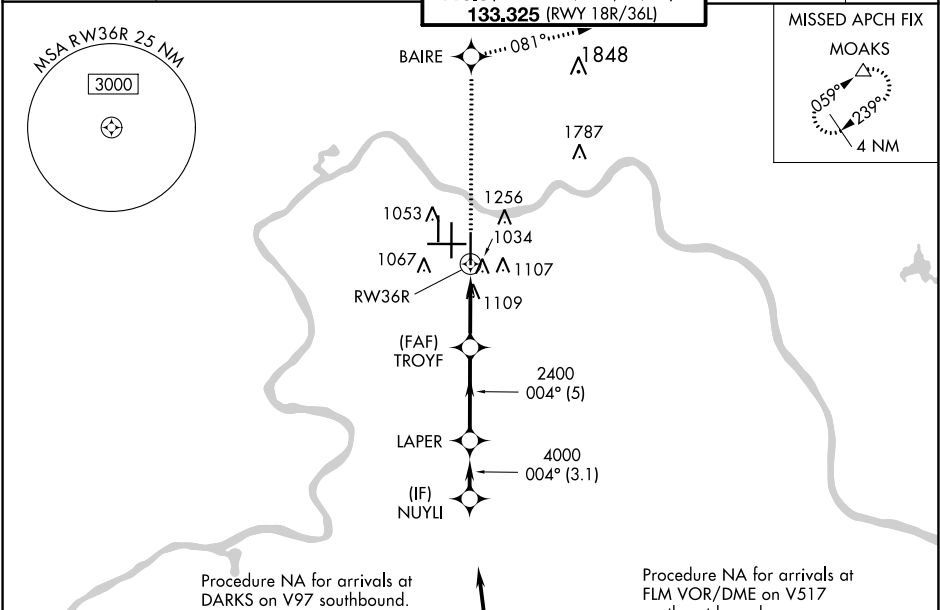
CINCINNATI/NORTHERN KENTUCKY INTL (CVG)

For uncompensated Baro-VNAV systems, LNAV/VNAV NA below -16°C (4°F) or above 47°C (116°F). DME/DME RNP-0.3 NA. Simultaneous approach authorized with Rwy 36L/C. LNAV procedure NA during simultaneous operations. Use of FD or AP providing RNAV track guidance required during simultaneous operations.

ALSIF-2

MISSED APPROACH:
Climb to 3000 direct to BAIRE and on 81° track to MOAKS and hold.

D-ATIS ARR 134.375 DEP 135.3	CINCINNATI APP CON 119.7 363.15 (090°-269°) 123.875 363.15 (270°-089°)	CINCINNATI TOWER 118.975 360.85 (RWY 18L/36R) 118.3 (RWYS 18C/36C, 09/27) 133.325 (RWY 18R/36L)	GND CON 121.7	CLNC DEL 127.175
---	--	---	-------------------------	----------------------------



3000	BAIRE	081° tr	MOAKS	VGSI and RNAV glidepath not coincident (VGSI Angle 3.00/TCH 70).
*LNAV only.	*1.2 NM to RWY36R	TROYF 2400	NUYLI 5000	Procedure Turn NA
RWY36R	1.2	3.3 NM	5 NM	3.1 NM
CATEGORY	A	B	C	D
LPV DA	1096/18 200 (200-½)			
LNAV/VNAV DA	1340/50 444 (500-1)			
LNAV MDA	1360/24	464 (500-½)	1360/40 464 (500-¾)	1360/50 464 (500-1)
CIRCLING	1460-1	564 (600-1)	1460-1½ 564 (600-½)	1560-2 664 (700-2)

SE-1, 03 DEC 2020 to 31 DEC 2020

SE-1, 03 DEC 2020 to 31 DEC 2020