

WAAS CH 40103 W18A	APP CRS 184°	Rwy Idg 10000 TDZE 889 Apt Elev 896
--	------------------------	--

RNAV (GPS) Y RWY 18L
CINCINNATI/NORTHERN KENTUCKY INTL (CVG)

V For uncompensated Baro-VNAV systems, LNAV/VNAV NA below -16°C (4°F) or above 47°C (116°F). DME/DME RNP-0.3 NA. Simultaneous approach authorized with Rwy 18C/R. LNAV procedure NA during simultaneous operations. Use of FD or AP providing RNAV track guidance required during simultaneous operations.

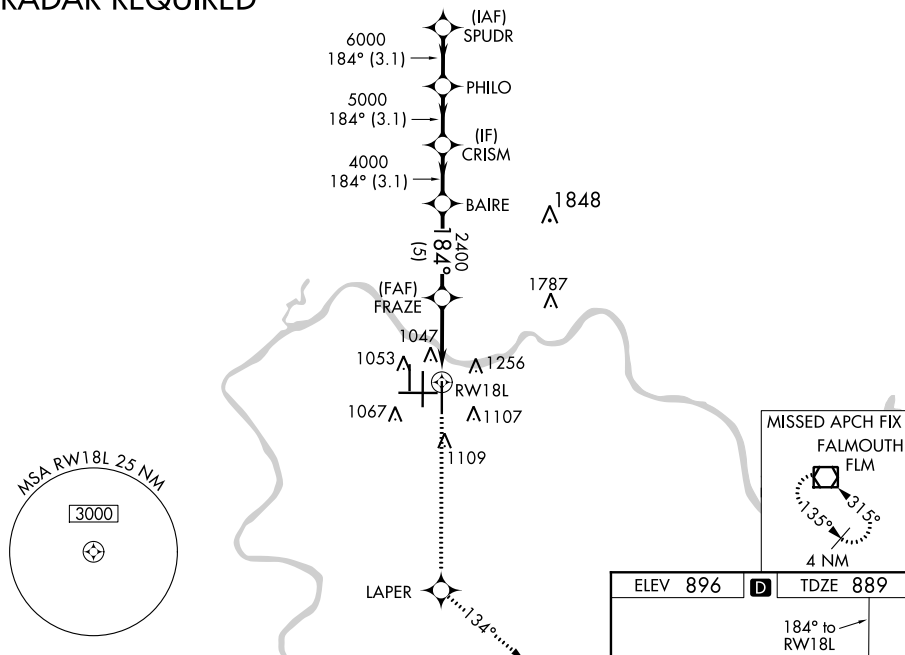
MALSR



MISSED APPROACH: Climb to 3000 direct LAPER and on 134° track to FLM VOR/DME and hold.

D-ATIS		CINCINNATI APP CON	CINCINNATI TOWER	GND CON	CINC DEL
ARR	DEP	119.7 363.15 (090°-269°)	118.975 360.85 (RWY 18L/36R)		
134.375	135.3	123.875 363.15 (270°-089°)	118.3 (RWYS 18C/36C 09/27)	121.7	127.175

RADAR REQUIRED



VGSI and RNAV glidepath not coincident (VGSI Angle 3.00/TCH 71).				<div>3000 ↑</div>		<div>LAPER </div>		<div>tr 134° </div>		FLM	
SPUDR		PHILO		CRISM		BAIRE		FRAZE		*1.3 NM to RW18L	
7000		184°		6000		5000		4000		2400	
GP 3.00° TCH 55										*LNAV only. RW18L	
3.1 NM		3.1 NM		3.1 NM		5 NM		3.3 NM		1.3 NM	
CATEGORY		A		B		C		D			
LPV DA				1089/18		200 (200-½)					
LNAV/ VNAV DA				1395/60		506 (500-1¼)					
LNAV MDA		1360/24		471 (500-½)		1360/40 471 (500-¾)		1360/50 471 (500-1)			
CIRCLING		1460-1		564 (600-1)		1460-1½ 564 (600-1½)		1560-2 664 (700-2)			

