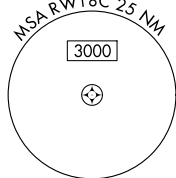


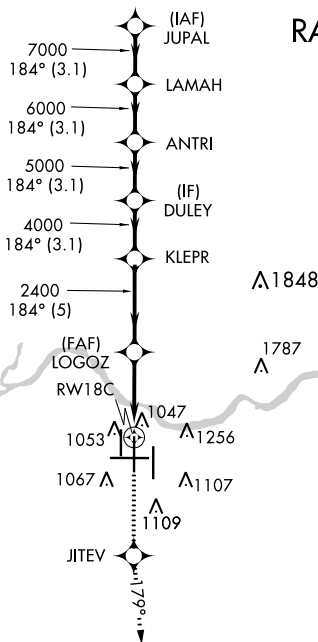
RNAV (GPS) Y RWY 18C
CINCINNATI/NORTHERN KENTUCKY INTL (CVG)

MALSR

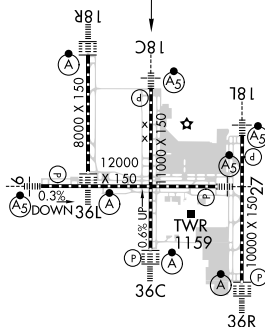
MISSED APPROACH: Climb to 3000 direct JITEV and on 179° track to ZIRKE and hold.

CLNC DEL
127.175

RADAR REQUIRED

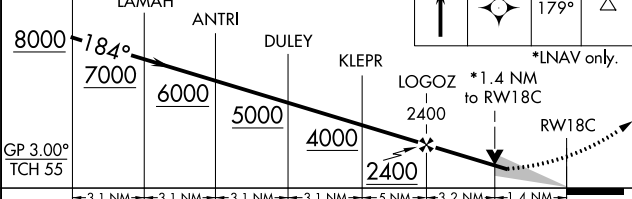


MISSED APCH FIX

 -184° to

HIRL all Rwys
TDZ/CL all Rwys except 27

JUPAL VGSI and RNAV glidepath not coincident (VGSI Angle 3.00/TCH 68).



| CATEGORY | | A | B | C | D |
|---------------|-----|---------|-------------|-------------------------|------------------------|
| LPV | DA | 1075/18 | | 200 (200-½) | |
| LNAV/ VNAV | DA | 1398/60 | | 523 (600-1¼) | |
| LNAV | MDA | 1360/24 | 485 (500-½) | 1360/40 485 (500-¾) | 1360/50 485 (500-1) |
| CIRCLING | | 1460-1 | 564 (600-1) | 1460-1½ 564 (600-1½) | 1560-2 664 (700-2) |

CINCINNATI/NORTHERN KENTUCKY INTL (CVG)
39°03'N-84°40'W RNAV (GPS) Y RWY 18C

RNAV (GPS) Y RWY 18C