

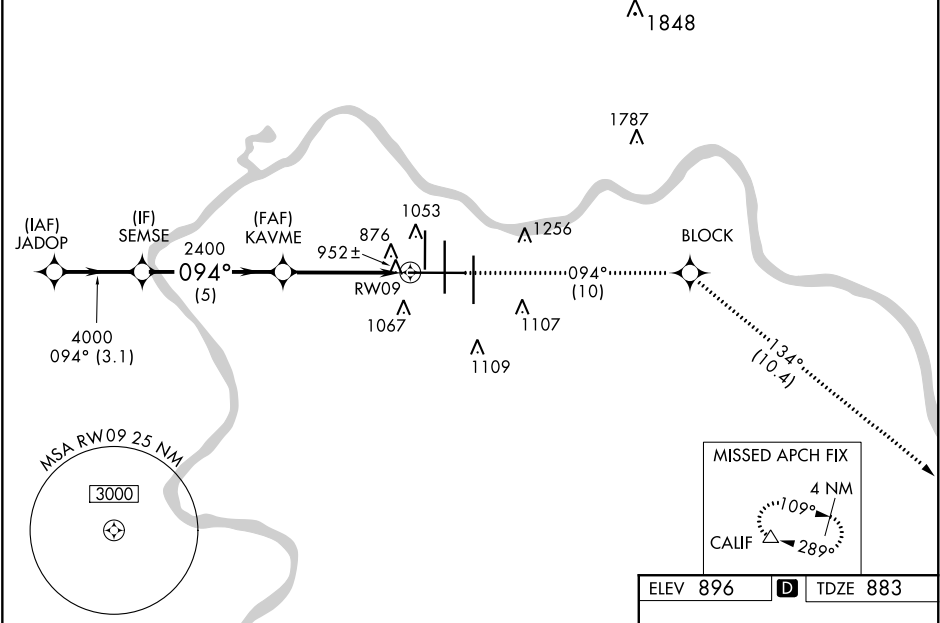
APP CRS	Rwy Idg	11640
094°	TDZE	883
	Apt Elev	896

RNAV (RNP) Z RWY 9

CINCINNATI/NORTHERN KENTUCKY INTL (CVG)

<div><div><div>GPS Required. For uncompensated Baro-VNAV systems, procedure NA below -16° C (4° F) or above 47° C (116° F). For inoperative MALSR, increase RNP 0.18 visibility to RVR 5000, RNP 0.30 visibility to RVR 6000.</div><div><div>MALSR</div><div><div><div></div></div></div></div></div></div>		MISSED APPROACH: Climb to 3000 via 094° track to BLOCK and via 134° track to CALIF and hold.				
D-ATIS		CINCINNATI APP CON		CINCINNATI TOWER	GND CON	CLNC DEL
ARR	DEP	119.7 363.15 (090°-269°) 123.875 363.15 (270°-089°)		118.975 360.85 (RWY 18L/36R) 118.3 (RWYS 18C/36C, 09/27) 133.325 (RWY 18R/36L)	121.7	127.175

RADAR REQUIRED



VGSI and RNAV glidepath not coincident (VGSI Angle 3.00/TCH 70).				<div>3000</div> <div>↑</div> <div>tr 09.4°</div>		<div>BLOCK</div> <div>✦</div> <div>tr 13.4°</div>		<div>CALIF</div> <div>△</div>	
<div><div>JADOP</div><div>5000</div><div>09.4°</div><div>4000</div><div>2400</div><div>KAVME</div><div>2400</div><div>RW09</div><div>GP 3.00° TCH 52</div><div>3.1 NM</div><div>5 NM</div><div>4.5 NM</div></div>									
CATEGORY		A		B		C		D	
RNP 0.18 DA		1199/24 316 (400-½)							
RNP 0.30 DA		1233/40 350 (400-¾)							
AUTHORIZATION REQUIRED									

