

APP CRS	Rwy Idg	11000
184°	TDZE	875
	Apt Elev	896

RNAV (RNP) Z RWY 18C
CINCINNATI/NORTHERN KENTUCKY INTL (CVG)

GPS Required. For uncompensated Baro-VNAV systems, procedure NA below -16°C (4°F) or above 47°C (116°F). For inoperative SSALR, increase RNP 0.15 visibility to 1½, RNP 0.30 visibility to 3¼. Simultaneous approach authorized with Rwy 18L/R. Use of FD or AP providing RNAV track guidance required during simultaneous operations.

MALSR

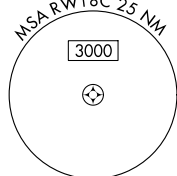


MISSED APPROACH: Climb to 3000 via 184° track to JITEV and via 179° track to ZIRKE and hold.

D-ATIS	CINCINNATI APP CON
ARR DEP	119.7 363.15 (090°- 269°)
134.375 135.3	123.875 363.15 (270°- 089°)

CINCINNATI TOWER
118.975 360.85 (RWY 18L/36R)
118.3 (RWYS 18C/36C, 09/27)
133.325 (RWY 18R/36L)

GND CON
121.7

CLNC DEL
127.175

7000
184° (3.1)

6000
184° (3.1)

5000
184° (3.1)

4000
184° (3.1)

IAF JUPAL

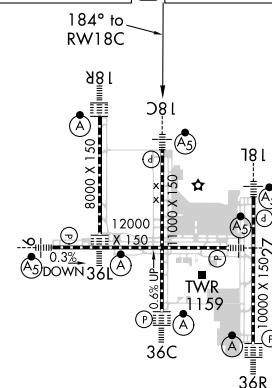
RADAR REQUIRED

Figure 1: A schematic diagram of the JIVE radio telescope array layout. The diagram shows a vertical line of radio telescopes with their names and coordinates. From top to bottom: (IAF) JUPAL at 7000, 184° (3.1); LAMAH at 6000, 184° (3.1); ANTRI at 5000, 184° (3.1); (IF) DULEY at 4000, 184° (3.1); KLEPR at 2400, 184° (5); (FAF) LOGOZ at 963±, 184° (4.6); RW18C at 1053; JITEV at 1790, 11.4. A horizontal line at 1050 represents the JIVE center. A map of India is shown in the background with a red dot indicating the location of the array.

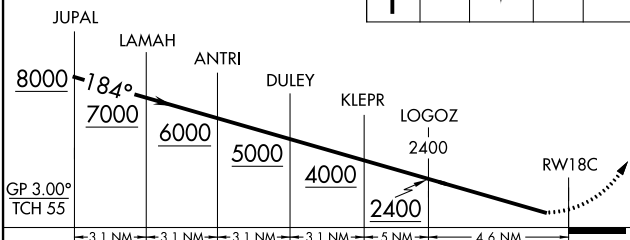
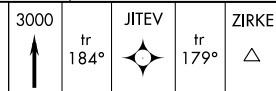
MISSED APCH FIX



ELEV 896	D	TDZE 875
----------	----------	----------



VGSI and RNAV glidepath not coincident (VGSI Angle 3.00/TCH 68).



CATEGORY	A	B	C	D
RNP 0.15 DA	1321/50	446 (500-1)		
RNP 0.30 DA	1389/60	514 (600-1 $\frac{1}{4}$)		

AUTHORIZATION REQUIRED