

## ARRIVAL ROUTE DESCRIPTION

ARTUR TRANSITION (ARTUR.JAKIE5):

CUBIM TRANSITION (CUBIM.JAKIE5):

DOLL TRANSITION (DOLL.JAKIE5):

**VOLUNTEER TRANSITION (VXV.JAKIE5):**

From JAKIE on track 336° to FLM VOR/DME, then on track 317° to FIDEK, then on track 006° to BAMGE, then on track 006° to AGEBE.

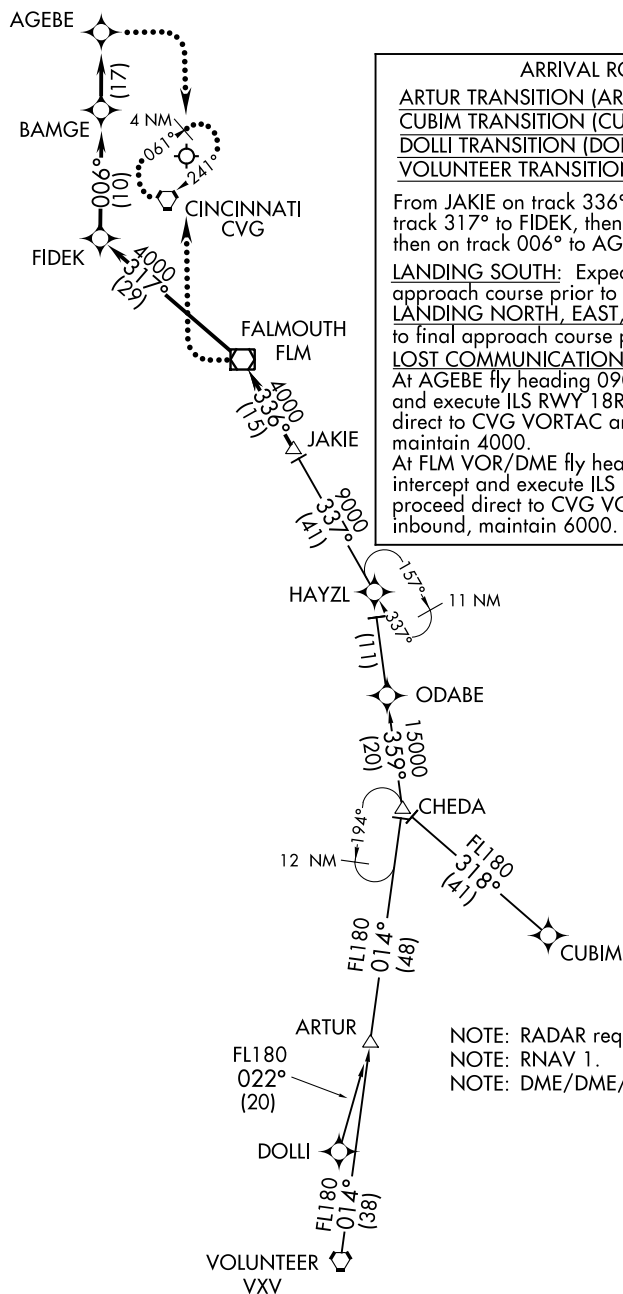
LANDING SOUTH: Expect RADAR vectors to final approach course prior to AGEBE.

LANDING NORTH, EAST, WEST: Expect RADAR vectors to final approach course prior to FIDEK.

LOST COMMUNICATIONS:

At AGEBE fly heading 090°, maintain 4000; intercept and execute ILS RWY 18R approach. If unable, proceed direct to CVG VORTAC and hold NE, RT, 241° inbound, maintain 4000.

At FLM VOR/DME fly heading 270°, maintain 6000;  
intercept and execute ILS RWY 36R approach. If unable,  
proceed direct to CVG VORTAC and hold NE, RT, 241°  
inbound, maintain 6000.



NOTE: RADAR required.

NOTE: RNAV 1.

NOTE: DME/DME/IRU or GPS required.

NOTE: Chart not to scale.

## JAKIE FIVE ARRIVAL (RNAV)

(JAKIE.JAKIE5) 16JUL20

COVINGTON, KENTUCKY

CINCINNATI/NORTHERN KENTUCKY INTL (CVG)