

| | | | |
|--|------------------------|-----------------------------|---|
| WAAS CH 48933 W14A | APP CRS 140° | Rwy Idg TDZE Apt Elev | 5399 401 410 |
|--|------------------------|-----------------------------|---|

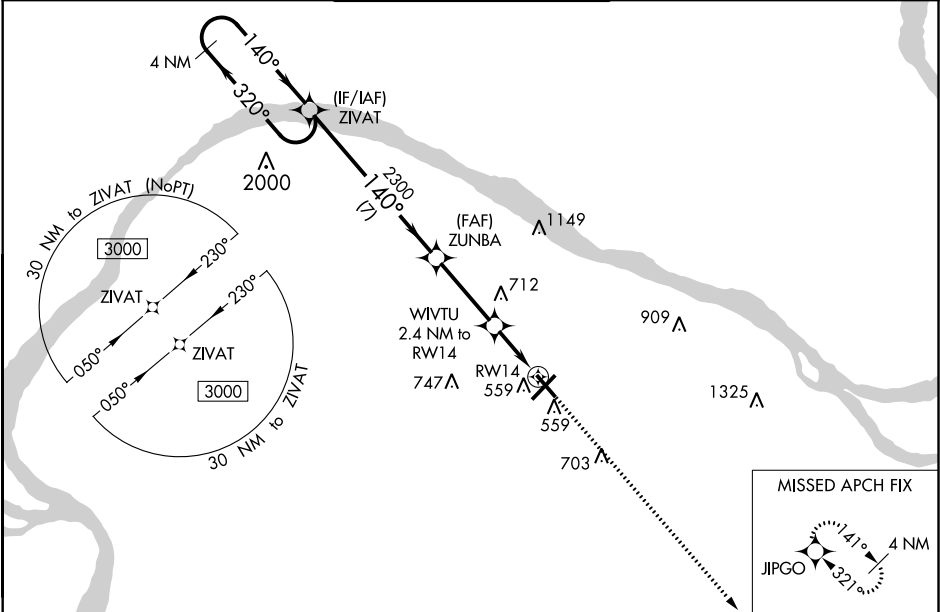
RNAV (GPS) RWY 14

BARKLEY RGNL (PAH)

Baro-VNAV NA when using Mayfield altimeter setting. For uncompensated Baro-VNAV systems, LNAV/VNAV NA below -15°C (5°F) or above 45°C (114°F). DME/DME RNP-0.3 NA. When local altimeter setting not received, use Mayfield altimeter setting and increase all DA 61 feet and all MDA 80 feet, increase LPV and LNAV/VNAV all Cats, LNAV Cats C and D and Circling Cat D visibility ½ mile. Helicopter visibility reduction below 1 SM NA. Straight-in/Circling Rwy 14 procedure NA at night.

MISSED APPROACH:
Climb to 3000 direct JIPGO and hold.

| | | | | |
|------------------------|--|--|-------------------------------|-------------------------|
| ASOS 118.375 | MEMPHIS CENTER 133.65 292.15 | PADUCAH TOWER ★ 119.6 (CTAF) 306.9 | GND CON 121.7 306.9 | UNICOM 122.95 |
|------------------------|--|--|-------------------------------|-------------------------|



4 NM Holding Pattern

ZIVAT

3000 ← 320°

140° →

GP 3.10° TCH 60

ZUNBA

2300

140°

2300

1200*

7 NM

3.2 NM

2.4

3000 JIPGO

↑

★ LNAV only

WIVTU 2.4 NM to RW14

RW14

| CATEGORY | A | B | C | D |
|--------------|-------|-------------|------------------------|-----------------------|
| LPV DA | 724-1 | | 323 (400-1) | |
| LNAV/VNAV DA | 726-1 | | 325 (400-1) | |
| LNAV MDA | 800-1 | 399 (400-1) | 800-1½ | 399 (400-1½) |
| CIRCLING | 880-1 | 470 (500-1) | 880-1½ 470 (500-1½) | 1100-2 690 (700-2) |

ELEV 410

D

TDZE 401

140° to RW14

0.3° UP

0.4° UP

22

473

TWR 466

45

HIRL Rwy 4-22

MIRL Rwy 14-32

REIL Rws 22 and 32