

WAAS CH 69510 W03A	APP CRS 034°	Rwy Idg TDZE Apt Elev	6501 547 547
--	------------------------	-----------------------------	---

RNAV (GPS) RWY 3

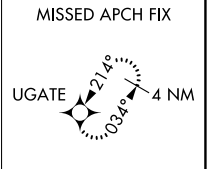
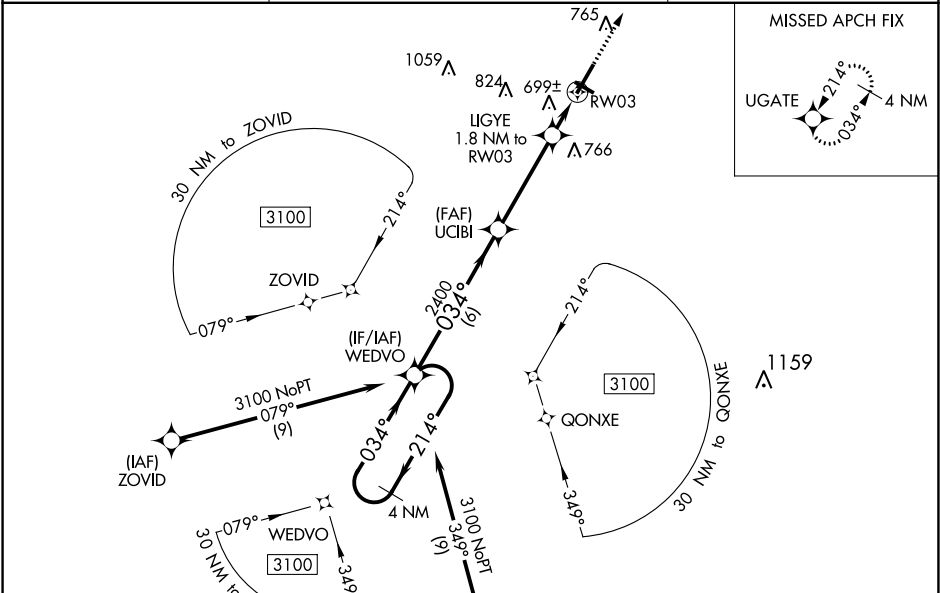
BOWLING GREEN-WARREN COUNTY RGNL (BWG)

⚠

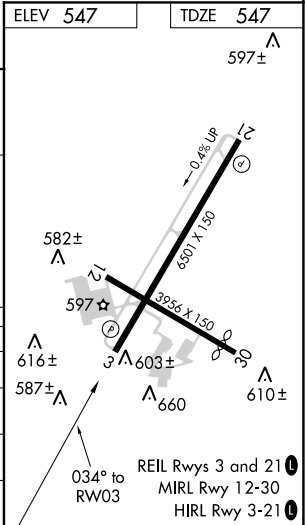
For uncompensated Baro-VNAV systems, LNAV/VNAV NA below -16°C (4°F) or above 54°C (130°F). DME/DME RNP-0.3 NA. Night landing: Rwy 30 NA. When local altimeter setting not received use Glasgow altimeter setting and increase all DA/MDA 80 feet; increase LPV all Cats visibility 1/8 mile and LNAV/VNAV all Cats 1/8 mile and LNAV Cat C and D and Circling Cat C and D visibility 1/4 mile. Helicopter visibility reduction below 3/4 SM NA. Baro-VNAV and VDP NA when using Glasgow altimeter setting.

MISSED APPROACH:
Climb to 3100 direct
UGATE and hold.

ASOS 127.825	MEMPHIS CENTER 133.85 317.6	UNICOM 123.0 (CTAF) 0
------------------------	---------------------------------------	---------------------------------



4 NM Holding Pattern		WEDVO	UCIBI	LIGYE	RW03
3100 ← 214°		034° →	2400	1.8 NM to RW03	
GP 3.00° TCH 44		034°	*1160	*1.2 NM to RW03	
		6 NM	3.9 NM	0.6 NM	1.2 NM
CATEGORY	A	B	C	D	
LPV DA	747-3/4		200 (200-3/4)		
LNAV/VNAV DA	1009-1 1/8		462 (500-1 1/8)		
LNAV MDA	960-1	413 (500-1)	960-1 1/8	413 (500-1 1/8)	
CIRCLING	1000-1 453 (500-1)	1120-1 573 (600-1)	1160-1 3/4 613 (700-1 3/4)	1200-2 653 (700-2)	



SE-1, 03 DEC 2020 to 31 DEC 2020

SE-1, 03 DEC 2020 to 31 DEC 2020