

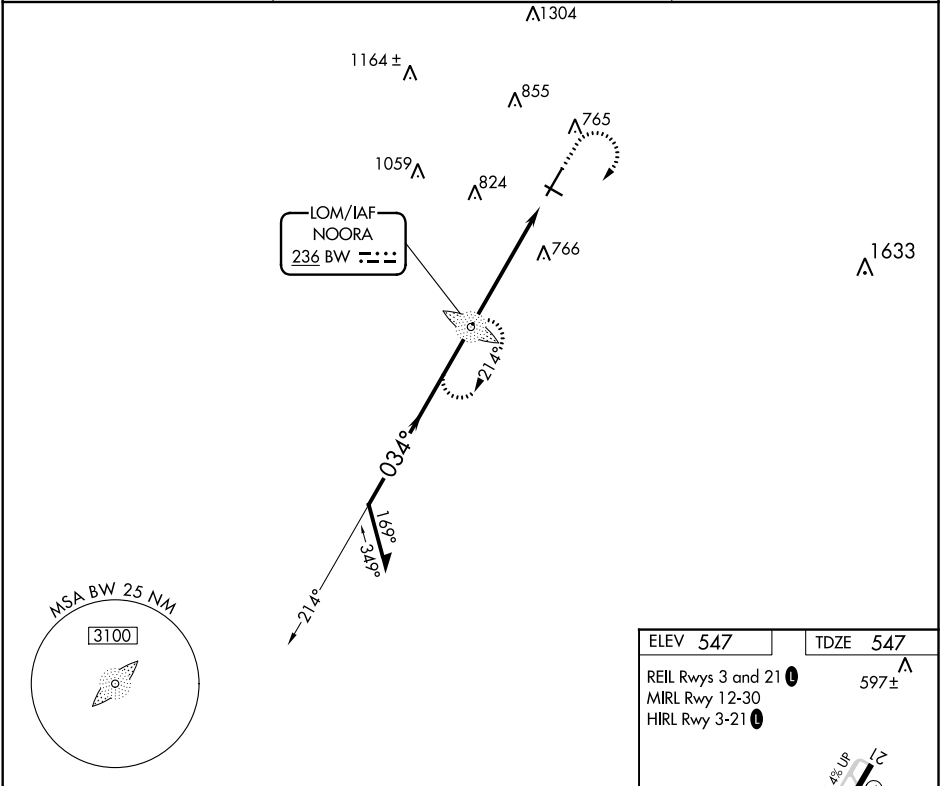
LOM BW	APP CRS	Rwy Idg	6501
236	034°	TDZE	547
		Apt Elev	547

NDB RWY 3

BOWLING GREEN-WARREN COUNTY RGNL (BWG)

<p>NA Circling to Rwy 30 NA at night.</p>	<p>MISSED APPROACH: Climb to 2000 then climbing right turn to 2400 direct NOORA LOM and hold.</p>
--	---

ASOS 127.825	MEMPHIS CENTER 133.85 317.6	UNICOM 123.0 (CTAF)
-----------------	--------------------------------	------------------------



Remain within 10 NM

NOORA LOM

214°

2400

034°

2400

3.13°

TCH 44

5.4 NM

2000

2400

NOORA

CATEGORY

A

B

C

D

S-3

1120-1

573 (600-1)

1120-1½

573 (600-1½)

CIRCLING

1120-1

573 (600-1)

1160-1¾

613 (700-1¾)

1200-2

653 (700-2)

582±

597

616±

587±

603±

660

610±

034° to RWY 03

FAF to MAP 5.4 NM

Knots

60

90

120

150

180

Min:Sec

5:24

3:36

2:42

2:10

1:48

12

30

0

30

12

630° X 150

39.56 X 150