

WAAS CH <b>63023</b> <b>W18A</b>	APP CRS <b>183°</b>	Rwy Idg TDZE Apt Elev	<b>5002</b> <b>1082</b> <b>1084</b>
--	------------------------	-----------------------------	---

## RNAV (GPS) RWY 18

TULLAHOMA RGNL AIRPORT/WM NORTHERN FIELD (THA)



**A NA**

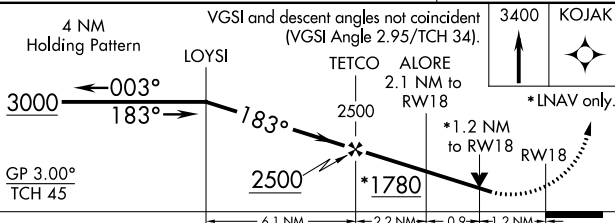
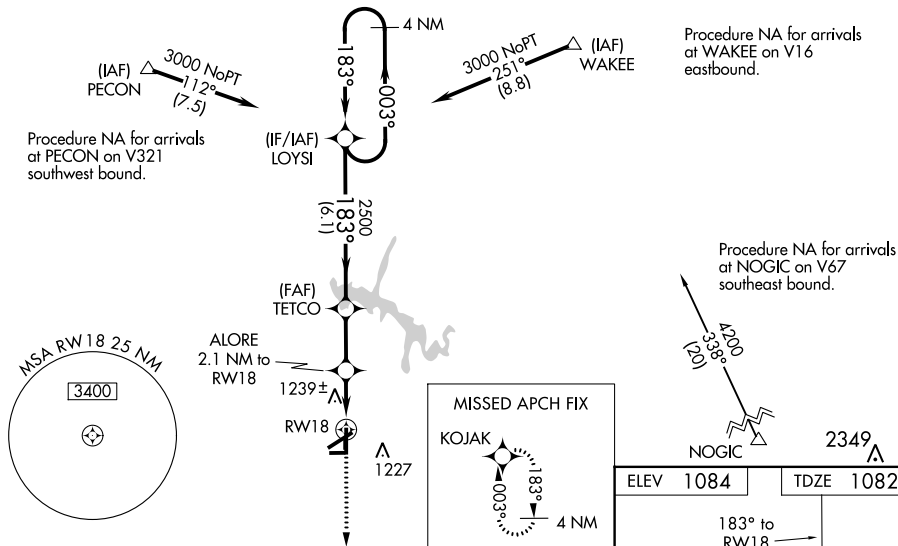
Baro-VNAV NA when using Nashville Intl altimeter setting. For uncompensated Baro-VNAV systems, LNAV/VNAV NA below -17°C (2°F) or above 37°C (98°F). DME/DMD RNP-0.3 NA. Helicopter visibility reduction below ¾ SM NA. When local altimeter setting not received, use Nashville Intl altimeter setting and increase all DA 182 feet and all MDA 200 feet, increase LPV all Cats visibility ½ mile, LNAV/VNAV all Cats visibility ¾ mile and LNAV Cat C and D visibility ¾ mile, increase Circling Cat C visibility ¼ mile and increase Circling Cat D visibility ½ mile. VDP NA when using Nashville Intl altimeter setting.

Circling NA to Rwys 9 and 27.

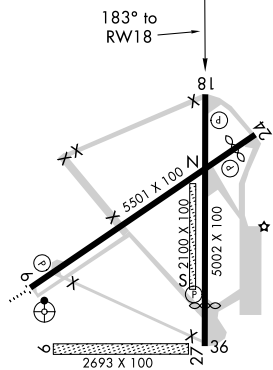
**MISSED APPROACH:**  
Climb to 3400 direct  
KOJAK and hold.

AWOS-3  
128.325

MEMPHIS CENTER  
128.15 323.125

UNICOM  
123.0 (CTAF) **L**

CATEGORY	A	B	C	D
LPV DA	1436-1¼ 354 (400-1¼)			
LNAV/ VNAV DA	1554-1½ 472 (500-1½)			
LNAV MDA	1500-1 418 (500-1)		1500-1½ 418 (500-1½)	
<b>C</b> CIRCLING	1540-1 456 (500-1)	1560-1 476 (500-1)	1580-1½ 496 (500-1½)	1640-2 556 (600-2)



MIRL Rwy's 6-24 and 18-36 **L**  
REIL Rwy's 6, 18, 24 and 36