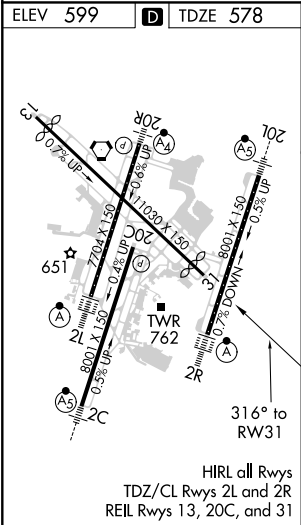
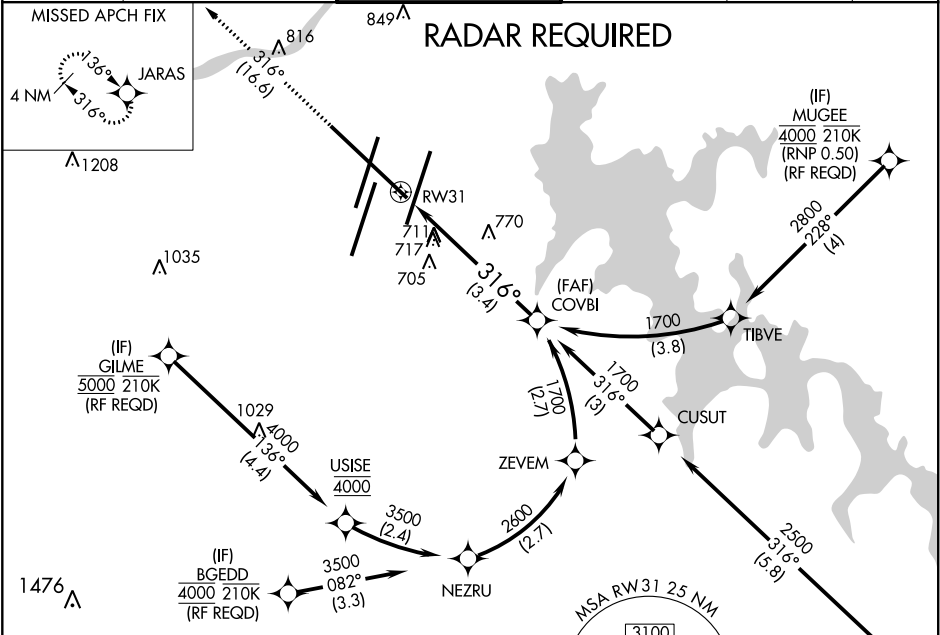


APP CRS	Rwy Idg	9487
316°	TDZE	578
	Apt Elev	599

RNAV (RNP) Z RWY 31

NASHVILLE INTL (BNA)

For uncompensated Baro-VNAV systems, procedure NA below -16°C (4°F) or above 54°C (130°F). GPS required.			MISSED APPROACH: Climb to 3100 on track 316° to JARAS and hold.		
D-ATIS	NASHVILLE APP CON	NASHVILLE TOWER	GND CON	CLNC DEL	CPDLC
135.1	118.4 360.7	118.6 257.8	121.9 348.6	126.05	



3100	tr	JARAS	See planview for multiple IF locations.		
↑	316°		COVBI	1700	
RW31			316°	1700	GP 3.00° TCH 52
3.4 NM					
CATEGORY	A	B	C	D	
RNP 0.25 DA	1025-1½	447 (500-1½)			
RNP 0.30 DA	1099-1¾	521 (600-1¾)			
AUTHORIZATION REQUIRED					