


APP CRS	Rwy Idg	<b>7601</b>
<b>021°</b>	TDZE	<b>587</b>
	Apt Elev	<b>599</b>

RNAV (RNP) Z RWY 2C

NASHVILLE INTL (BNA)

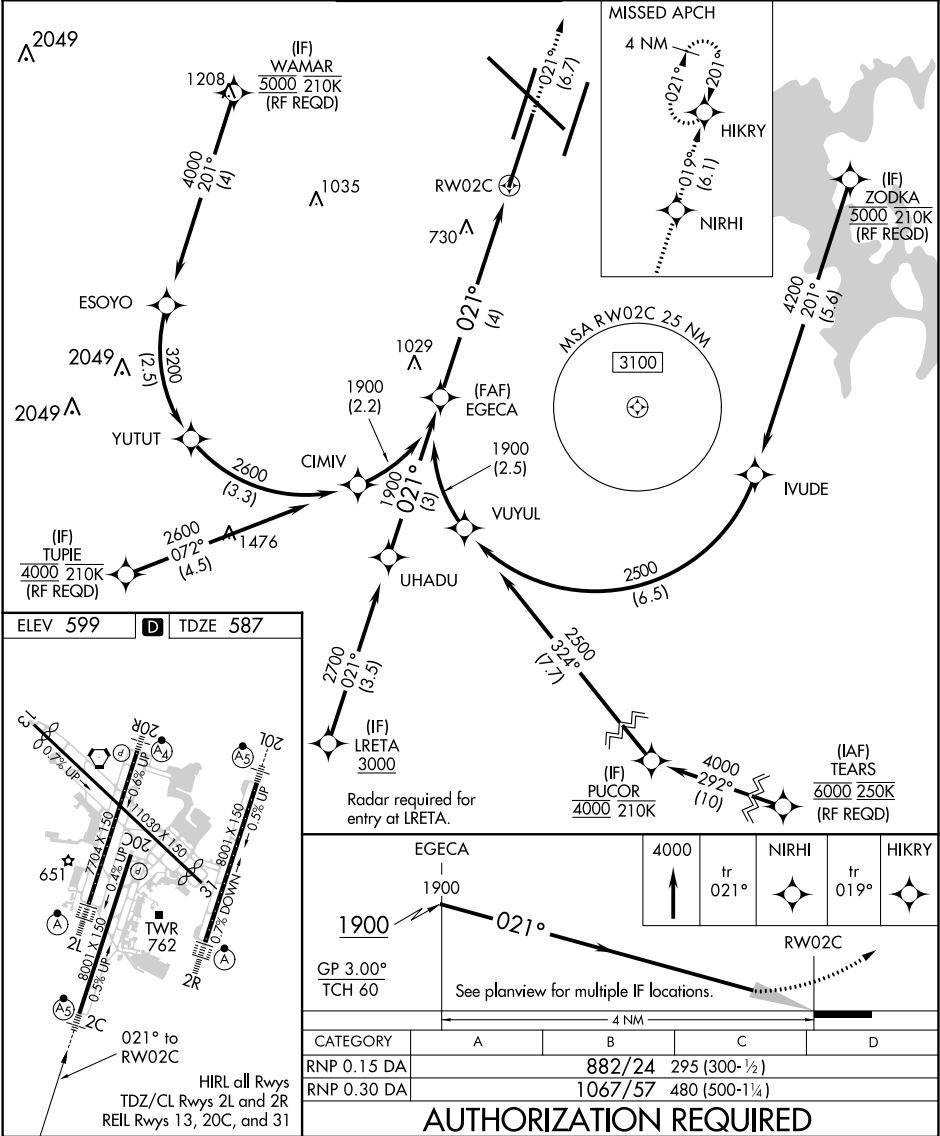
**T** For uncompensated Baro-VNAV systems, procedure NA below -11°C (13°F) or above 54°C (130°F). GPS required. Simultaneous approach authorized with Rwy 2R. Use of FD or AP providing RNAV track guidance required during simultaneous operations. For inop MALSR, increase RNP 0.30 visibility to 1½ mile.

MALSR



MISSED APPROACH: Climb to 4000 on track 021° to NIRHI and on track 019° to HIKRY and hold, continue climb-in-hold to 4000.

D-ATIS <b>135.1</b>	NASHVILLE APP CON <b>118.4 360.7</b>	NASHVILLE TOWER <b>118.6 257.8</b>	GND CON <b>121.9 348.6</b>	CLNC DEL <b>126.05</b>	CPDLC
------------------------	---	---------------------------------------	-------------------------------	---------------------------	-------



SE-1, 03 DEC 2020 to 31 DEC 2020

SE-1, 03 DEC 2020 to 31 DEC 2020