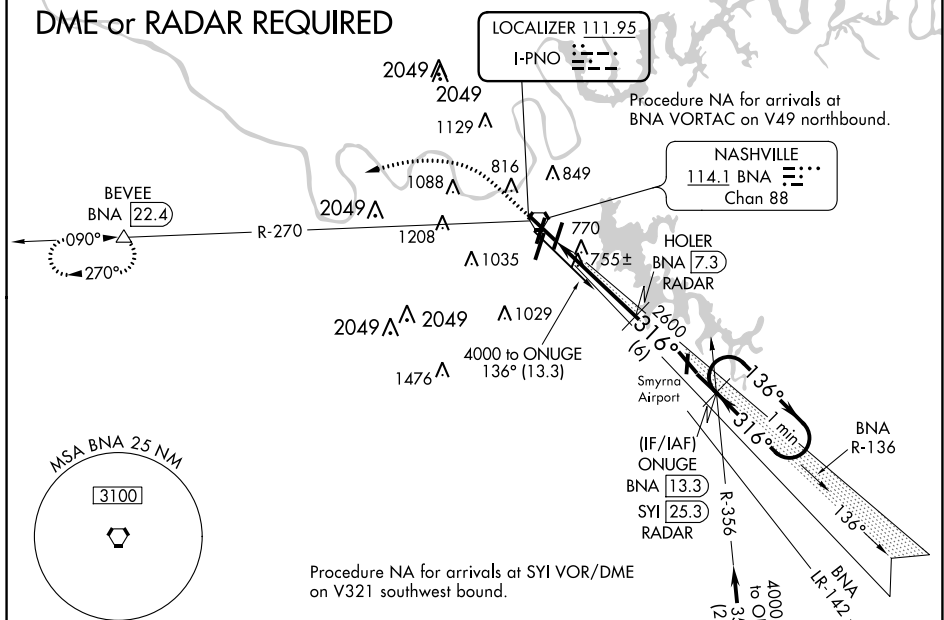


ILS or LOC RWY 31  
NASHVILLE INTL (BNA)

- MISSED APPROACH:** Climb to 1400 then climbing left turn to 4000 on BNA VORTAC R-270 to BEVEE/BNA 22.4 DME and hold.

D-ATIS 135.1	NASHVILLE APP CON 118.4 360.7	NASHVILLE TOWER 118.6 257.8	GND CON 121.9 348.6	CLNC DEL 126.05	CPDLC
-----------------	----------------------------------	--------------------------------	------------------------	--------------------	-------

## DME or RADAR REQUIRED



ELEV 599

**D**

TDZE 578

0.7% UP

0.4% UP

0.8% UP

0.5% UP

0.7% DOWN

0.4% DOWN

0.8% DOWN

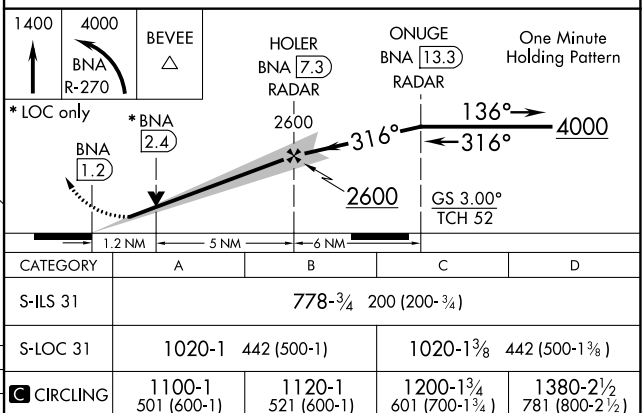
0.5% DOWN

TWR 762

316° 6.2 NM  
from FAF

HIRL all Rwy's  
TDZ/CL Rwy's 2L and 2R  
REIL Rwy's 13, 20C, and 31

FAF to MAP 6.2 NM					
Knots	60	90	120	150	180
Min:Sec	6:12	4:08	3:06	2:29	2:04



SE-1, 03 DEC 2020 to 31 DEC 2020