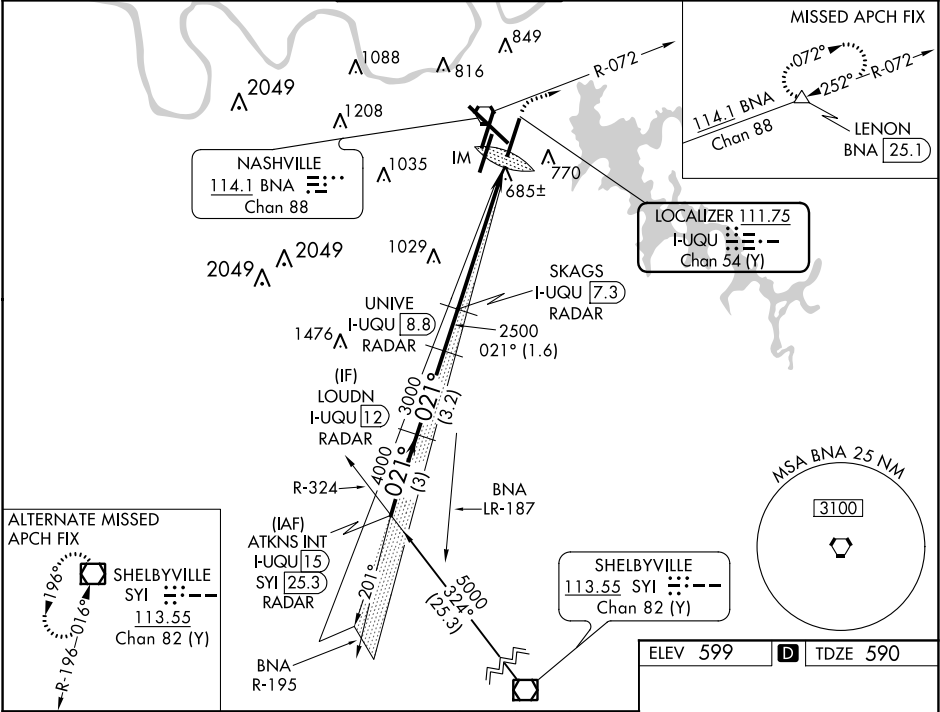


LOC/DME I-UQU 111.75 Chan 54 (Y)	APP CRS 021°	Rwy Idg TDZE 590 Apt Elev 599
--	------------------------	---

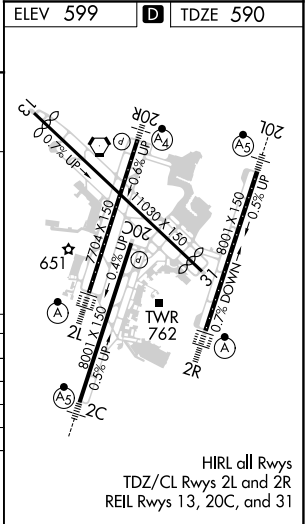
ILS RWY 2R (CAT II & III)
NASHVILLE INTL (BNA)

DME required.	ALSF-2	MISSED APPROACH: Climb to 1300 then climbing right turn to 3000 on BNA R-072 to LENON/BNA 25.1 DME and hold.
Simultaneous approach authorized with Rwy 2L/C.		

D-ATIS 135.1	NASHVILLE APP CON 118.4 360.7	NASHVILLE TOWER 118.6 257.8	GND CON 121.9 348.6	CLNC DEL 126.05	CPDLC
------------------------	---	---------------------------------------	-------------------------------	---------------------------	-------



ATKNS INT I-UQU 15 RADAR	LOUDN I-UQU 12 RADAR	UNIVE I-UQU 8.8 RADAR	SKAGS I-UQU 7.3 RADAR	IM 690
5000	4000	3000	2500	2500
GS 3.00° TCH 59				
	3 NM	3.2 NM	1.6 NM	5.7 NM
CATEGORY	A	B	C	D
S-ILS 2R	CAT II	RA 116/12	100	DA 690
S-ILS 2R		CAT IIIa	RVR 07	
S-ILS 2R		CAT IIIb	RVR 06	
S-ILS 2R		CAT IIIc	NA	



CATEGORY II & III ILS - SPECIAL AIRCREW
& AIRCRAFT CERTIFICATION REQUIRED

SE-1, 03 DEC 2020 to 31 DEC 2020

SE-1, 03 DEC 2020 to 31 DEC 2020

HIRL all Rwy's
TDZ/CL Rwy's 2L and 2R
REIL Rwy's 13, 20C, and 31