

LOC/DME I-BNA 109.9 Chan 36	APP CRS 021°	Rwy Idg TDZE 599 Apt Elev 599
---	------------------------	---

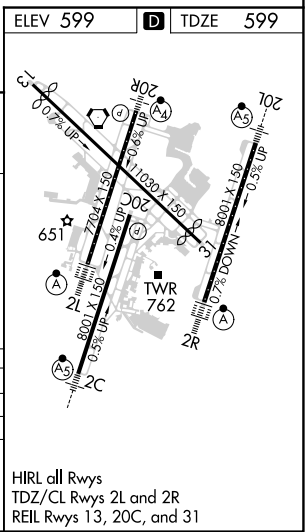
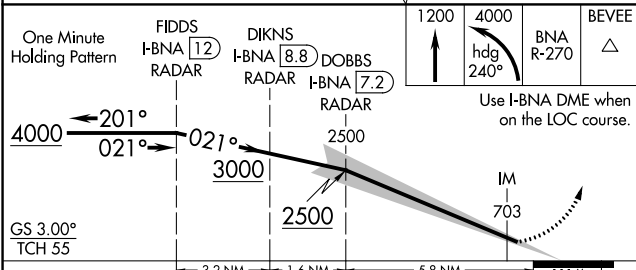
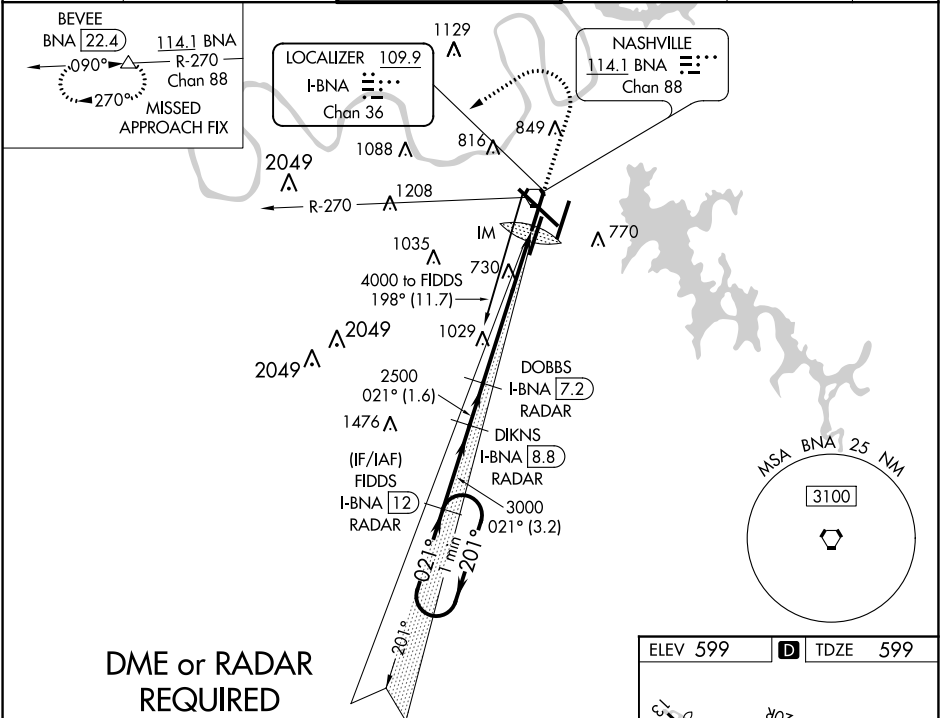
ILS RWY 2L (CAT II & III)
NASHVILLE INTL (BNA)

Simultaneous approach authorized with Rwy 2R.
DME or radar required. Cat II: RVR 1000 authorized with specific OPSPEC, MSPEC, or LOA approval and use of Autoland or HUD to touchdown.

ALSF-2

MISSED APPROACH: Climb to 1200 then climbing left turn to 4000 on heading 240° and on BNA VORTAC R-270 to BEVEE/BNA 22.4 DME and hold.

D-ATIS 135.1	NASHVILLE APP CON 118.4 360.7	NASHVILLE TOWER 118.6 257.8	GND CON 121.9 348.6	CLNC DEL 126.05	CPDLC
------------------------	---	---------------------------------------	-------------------------------	---------------------------	-------



CATEGORY	A	B	C	D
S-ILS 2L	CAT II RA 104/12 100 DA 699			
S-ILS 2L	CAT III RVR 600			

CATEGORY II & III ILS - SPECIAL AIRCREW
& AIRCRAFT CERTIFICATION REQUIRED

HIRL all Rwy's
TDZ/CL Rwy's 2L and 2R
REIL Rwy's 13, 20C, and 31

SE-1, 03 DEC 2020 to 31 DEC 2020

SE-1, 03 DEC 2020 to 31 DEC 2020