

(SELPH6.SELPH) 18312
SELPH SIX DEPARTURE (RNAV)

AL-253 (FAA)

MEMPHIS INTL (MEM)
MEMPHIS, TENNESSEE

D-ATIS
127.75
CLNC DEL
125.2
CPDLC
GND CON
121.0 379.2 (Rwy 9-27)
121.9 379.2 (Rwys 18C-36C, 18L-36R)
121.65 379.2 (Rwy 18R-36L)
MEMPHIS TOWER
118.3 257.8 (Rwy 9-27)
119.7 257.8 (Rwys 18C-36C, 18L-36R)
128.425 257.8 (Rwy 18R-36L)
MEMPHIS DEP CON
124.15 385.45

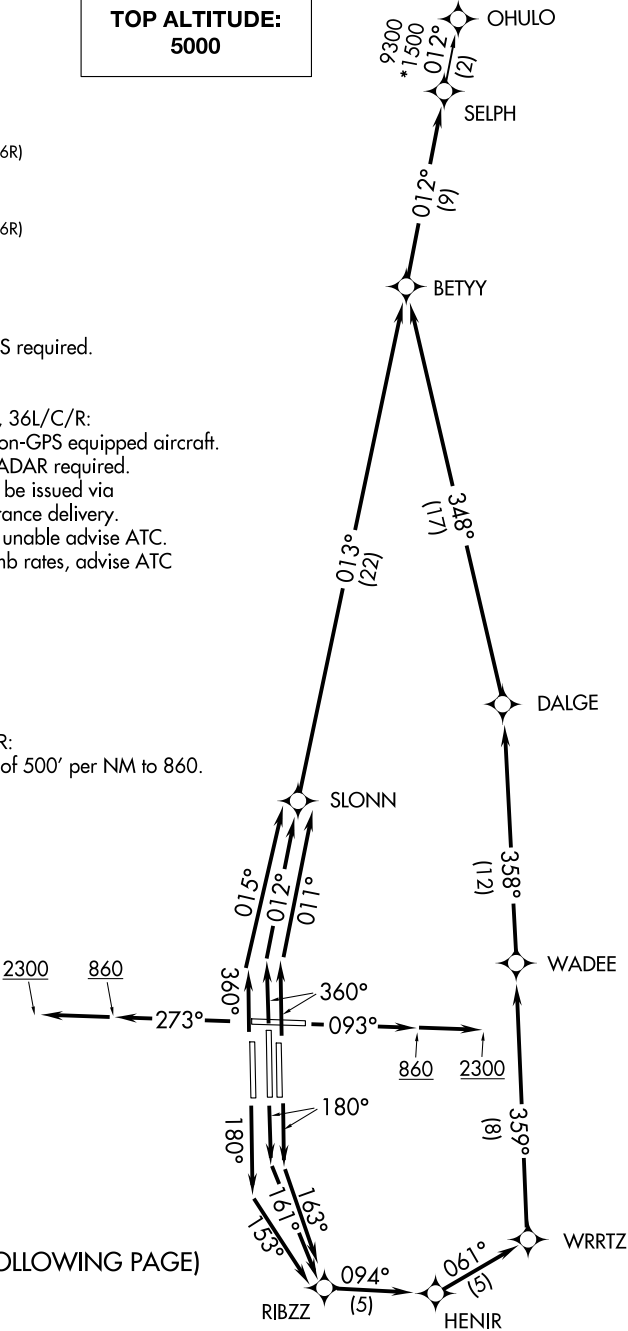
TOP ALTITUDE:
5000

- NOTE: DME/DME/IRU or GPS required.
NOTE: RNAV 1.
NOTE: Turbojets only.
NOTE: Takeoff Rwy 18L/C/R, 36L/C/R:
RADAR required for non-GPS equipped aircraft.
NOTE: Takeoff Rwy 9, 27 - RADAR required.
NOTE: Transponder code will be issued via
PDC or Memphis clearance delivery.
NOTE: Accelerate to 250K, if unable advise ATC.
NOTE: If unable to accept climb rates, advise ATC
on initial contact.

TAKEOFF MINIMUMS:
Rwy 9, 18L/C/R, 27, 36L/C/R:
Standard with minimum climb of 500' per NM to 860.

(NARRATIVE ON FOLLOWING PAGE)

NOTE: Chart not to scale.



SE-1, 03 DEC 2020 to 31 DEC 2020

SE-1, 03 DEC 2020 to 31 DEC 2020