

WAAS CH 56606 W18A	APP CRS 180°	Rwy Idg TDZE Apt Elev	9320 295 341
--	------------------------	-----------------------------	---

RNAV (GPS) Z RWY 18R

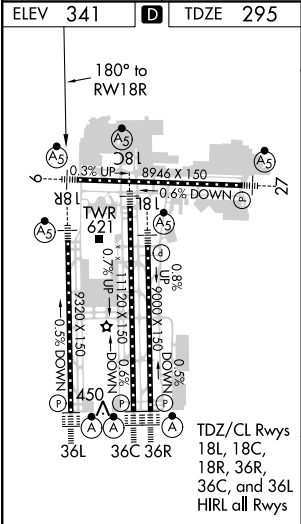
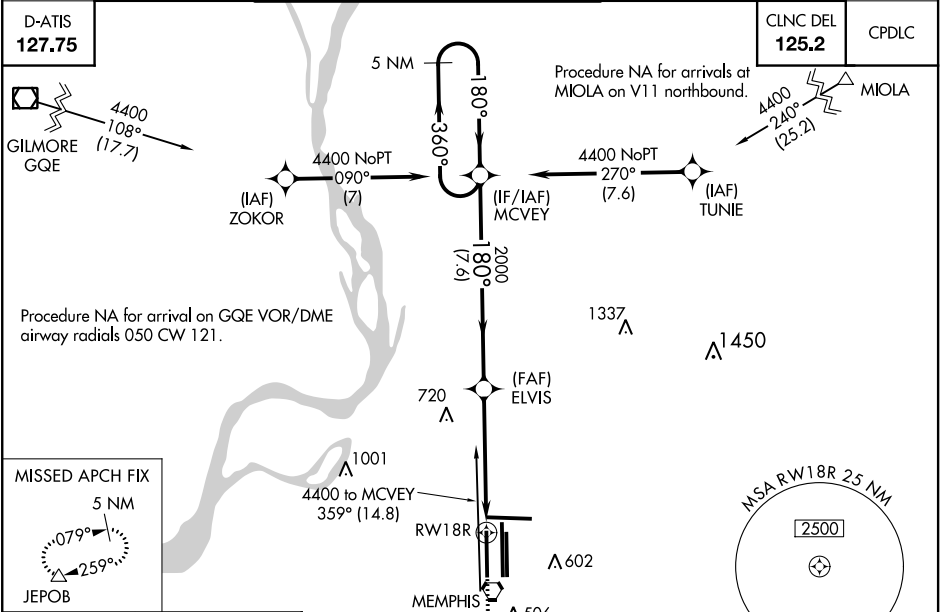
MEMPHIS INTL (MEM)

⚠ For uncompensated Baro-VNAV systems, LNAV/VNAV NA below -15°C (5°F) or above 48°C (118°F). Simultaneous approach authorized. DME/DME RNP-0.3 NA. LNAV procedure NA during simultaneous operations. Use of FD or AP required during simultaneous operations.

MALSR

MISSED APPROACH:
Climb to 900 then climbing right turn to 5000 direct to JEPOB and hold.

MEMPHIS APP CON	MEMPHIS TOWER	GND CON
119.1 291.6 (176°-355°)	(Rwy 9-27) 118.3 257.8	(Rwy 9-27) 121.0 379.2
125.8 338.3 (356°-175°)	(Rwys 18C-36C, 18L-36R) 119.7 257.8	(Rwys 18C-36C, 18L-36R) 121.9 379.2
	(Rwy 18R-36L) 128.425 257.8	(Rwy 18R-36L) 121.65 379.2



<div><div>900 ↑</div><div>5000 ↗</div><div>JEPOB △</div></div> <div><div>*LNAV only</div><div><div>RW18R</div><div>*1.7 NM to RW18R</div><div>ELVIS 2000</div><div>MCVEY</div><div>5 NM Holding Pattern</div><div>360° → 4400</div><div>← 180°</div><div>GP 3.00° TCH 52</div></div></div>				
<div><div>1.7 NM</div><div>3.4 NM</div><div>7.6 NM</div></div>				
CATEGORY	A	B	C	D
LPV DA	495/18 200 (200-½)			
LNAV/VNAV DA	874-1½ 579 (600-1½)			
LNAV MDA	880/24 585 (600-½)	880/50 585 (600-1)	880/60 585 (600-1¼)	
CIRCLING	940-1 599 (600-1)	940-1½ 599 (600-½)	1020-2¼ 679 (700-2¼)	

SE-1, 03 DEC 2020 to 31 DEC 2020

SE-1, 03 DEC 2020 to 31 DEC 2020