

WAAS CH 97507 W18D	APP CRS 180°	Rwy Idg TDZE 290 Apt Elev 341
--	------------------------	---

RNAV (GPS) Z RWY 18C
MEMPHIS INTL (MEM)

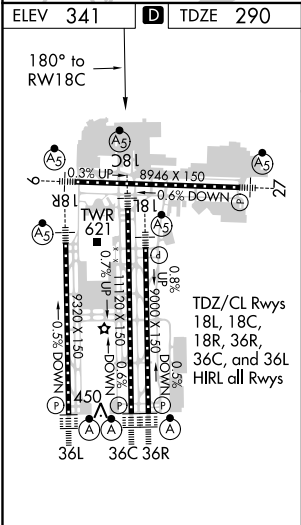
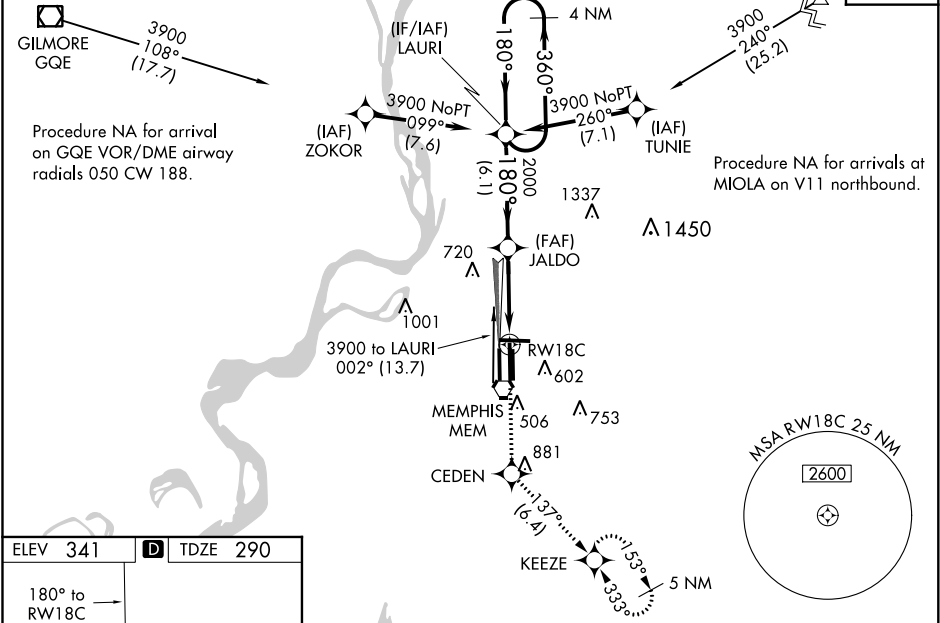
⚠ For uncompensated Baro-VNAV systems, LNAV/VNAV NA below -15°C (5°F) or above 48°C (118°F). Simultaneous approach authorized. DME/DME RNP-0.3 NA. Use of FD or AP required during simultaneous operations. LNAV procedure NA during simultaneous operations.

MALSR

MISSED APPROACH: Climb to 5000 direct CEDEN and on track 137° to KEEZE and hold, continue climb-in-hold to 5000.

MEMPHIS APP CON	MEMPHIS TOWER	GND CON	CLNC DEL
119.1 291.6 (176°-355°)	118.3 257.8 (Rwy 9-27)	121.0 379.2 (Rwy 9-27)	125.2
125.8 338.3 (356°-175°)	119.7 257.8 (Rwys 18C-36C, 18L-36R)	121.9 379.2 (Rwys 18C-36C, 18L-36R)	
	128.425 257.8 (Rwy 18R-36L)	121.65 379.2 (Rwy 18R-36L)	

D-ATIS 127.75	CPDLC
-------------------------	-------



5000	CEDEN	tr 137°	KEEZE	LAURI	4 NM Holding Pattern
*LNAV only					
CATEGORY	A	B	C	D	
LPV DA	665/40 375 (400-¾)				
LNAV/VNAV DA	782/60 492 (500-1¼)				
LNAV MDA	880/24	590 (600-½)	880/50 590 (600-1)	880/60 590 (600-1¼)	
C CIRCLING	940-1	599 (600-1)	940-1½ 599 (600-1½)	1020-2¼ 679 (700-2¼)	

SE-1, 03 DEC 2020 to 31 DEC 2020

SE-1, 03 DEC 2020 to 31 DEC 2020