


APP CRS	Rwy Idg	9000
180°	TDZE	301
	Apt Elev	341

# RNAV (RNP) Y RWY 18L

MEMPHIS INTL (MEM)

**▼** For uncompensated Baro-VNAV systems, procedure NA below -9°C (16°F) or above 48°C (118 °F). GPS required. Simultaneous approach authorized. For inop ALS, increase RNP 0.30 \* all Cats visibility to RVR 6000 and RNP 0.30 all Cats visibility to 1¼ SM.

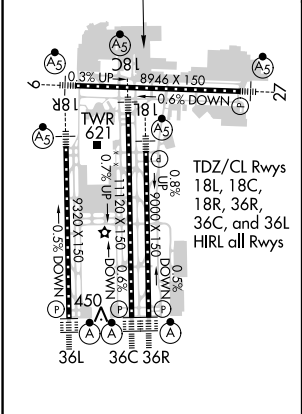
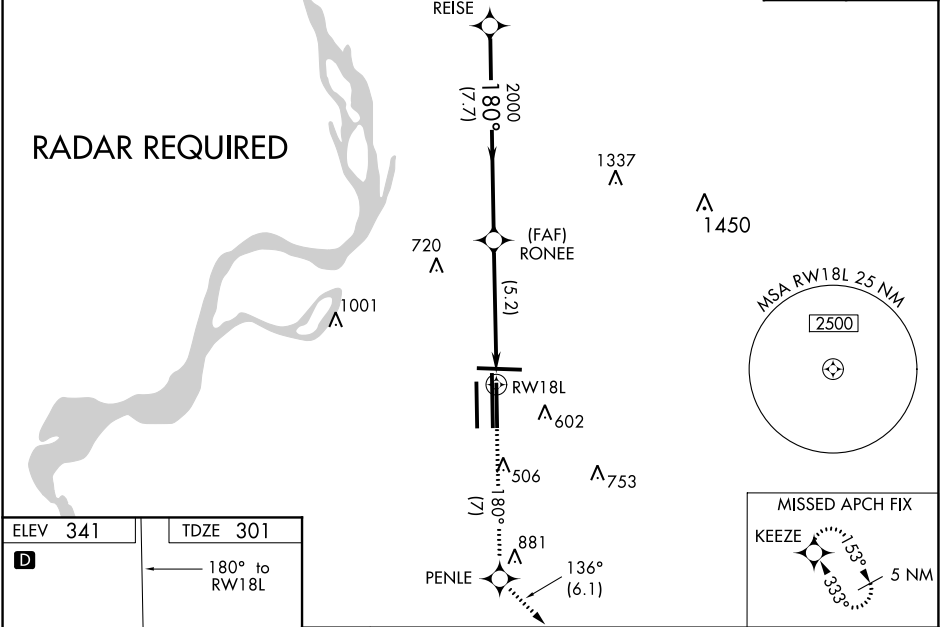
MALSR



MISSED APPROACH: Climb to 5000 on track 180° to PENLE and on track 136° to KEEZE and hold, continue climb-in-hold to 5000. \*Missed approach requires minimum climb of 400 feet per NM to 1000.

MEMPHIS APP CON	MEMPHIS TOWER	GND CON
119.1 291.6 (176°-355°)	(Rwy 9-27) 118.3 257.8	(Rwy 9-27) 121.0 379.2
125.8 338.3 (356°-175°)	(Rwys 18C-36C, 18L-36R) 119.7 257.8	(Rwys 18C-36C, 18L-36R) 121.9 379.2
	(Rwy 18R-36L) 128.425 257.8	(Rwy 18R-36L) 121.65 379.2

D-ATIS	CLNC DEL	CPDLC
127.75	125.2	



5000	tr 180°	PENLE	tr 136°	KEEZE	VGSI and RNAV glidepath not coincident (VGSI Angle 3.00/TCH 73).
		RONEE			
		RW18L			
		2000		4400	
		5.2 NM		7.7 NM	
					GP 3.00° TCH 60
CATEGORY	A	B	C	D	
RNP 0.30 DA*		698/50	397 (400-1)		
RNP 0.30 DA		791/60	490 (500-1¼)		

**AUTHORIZATION REQUIRED**

SE-1, 03 DEC 2020 to 31 DEC 2020

SE-1, 03 DEC 2020 to 31 DEC 2020