

APP CRS 180°	Rwy Idg TDZE Apt Elev	9320 295 341
------------------------	-----------------------------	---

RNAV (RNP) X RWY 18R
MEMPHIS INTL (MEM)

T For uncompensated Baro-VNAV systems, procedure NA below -9°C (16°F) or above 48°C (118°F). Simultaneous approach authorized. GPS required. Missed approach requires RNP less than 1.0. Use of FD or AP required during simultaneous operations.

MALSR



MISSED APPROACH: Climb to 5000 on track 180° to ZUPIN and on track 180° to HARUB and on track 180° to JAGUR and on track 223° to JEPOB and hold.

MEMPHIS APP CON
119.1 291.6 (176°-355°)
125.8 338.3 (356°-175°)

MEMPHIS TOWER		
(Rwy 9-27)	118.3	257.8
(Rwys 18C-36C, 18L-36R)	119.7	257.8
(Rwy 18R-36L)	128.425	257.8

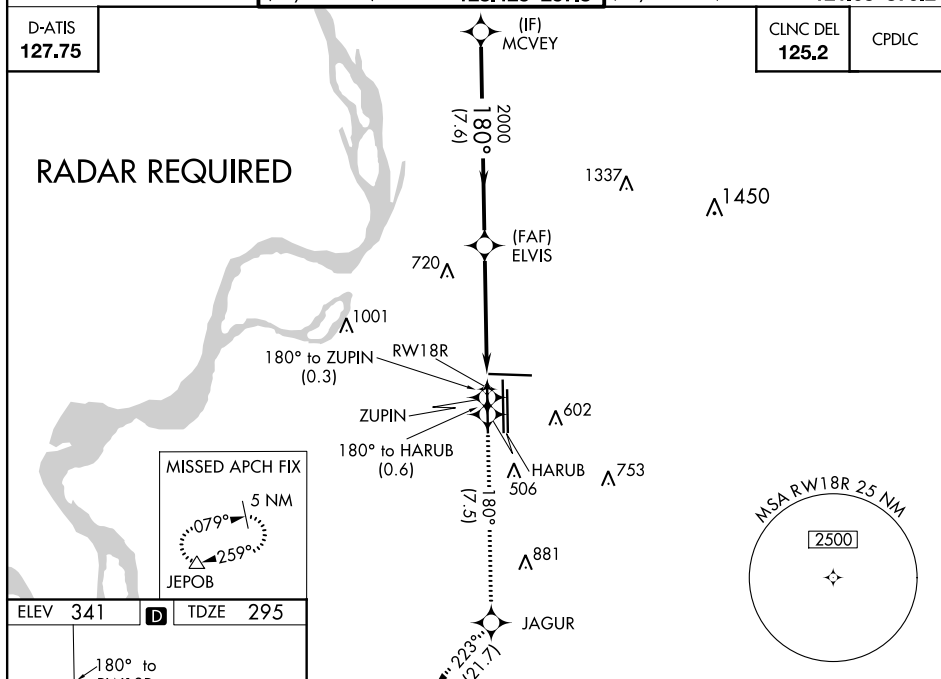
	GND CON		
(Rwy 9-27)		121.0	379.2
(Rwys 18C-36C, 18L-36R)		121.9	379.2
(Rwy 18R-36L)		121.65	379.2

D-ATIS
127.75

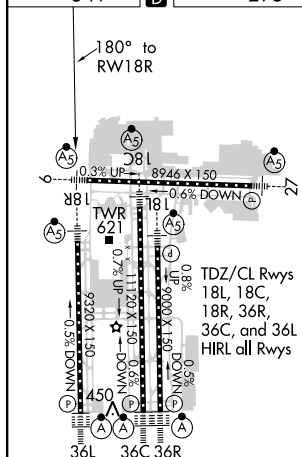
CLNC DEL
125.2






CPDLC

RADAR REQUIRED



ELEV	341		TDZE	295
------	-----	---	------	-----



5000	tr 180°	ZUPIN	tr 180°	HARUB	tr 180°	JAGUR	tr 223°	JEPOB
								

MCVEY

GP 3.00°
TCH 52

CATEGORY	A	B	C	D
RNP 0.14 DA	737/45 442 (400-7%)			

AUTHORIZATION REQUIRED