

| | | | |
|-----------|---------|----------|------|
| LOC I-MEM | APP CRS | Rwy Idg | 8946 |
| 109.5 | 093° | TDZE | 259 |
| | | Apt Elev | 341 |

ILS or LOC RWY 9
MEMPHIS INTL (MEM)

For inop ALS, increase S-ILS 9 Cat E visibility to RVR 4000 and S-LOC 9 Cat E visibility to 1¾ SM.



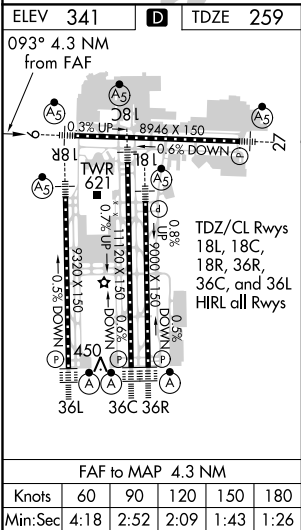
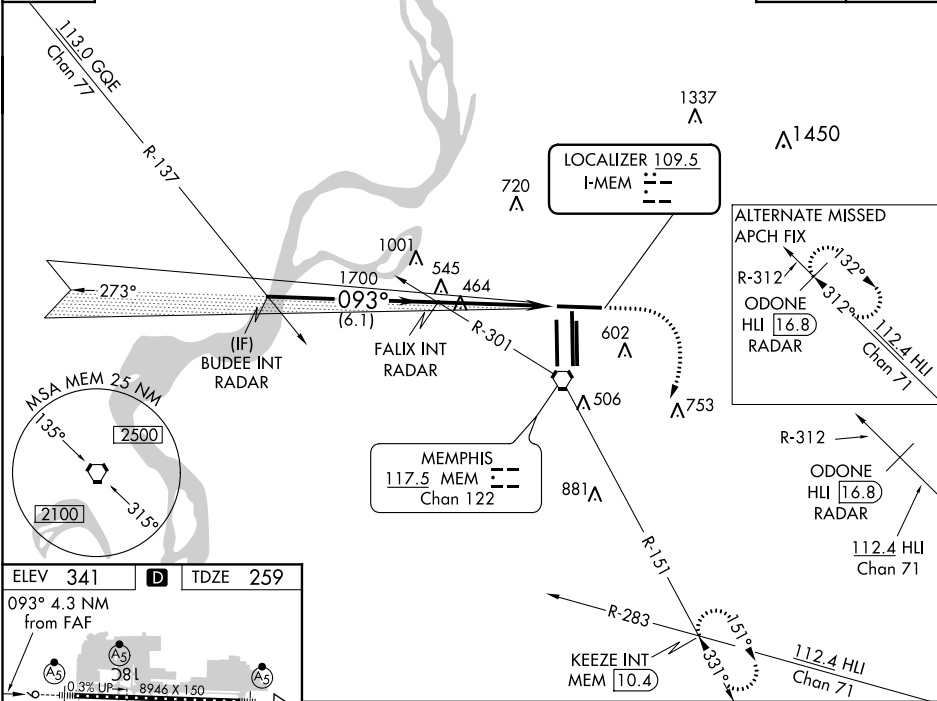
MISSED APPROACH: Climb to 1000 then climbing right turn to 5000 on MEM R-151 to KEEZE INT/MEM 10.4 DME and hold, continue climb-in-hold to 5000.

| | | | | | |
|-----------------|-------|-------------------------|---------------|-------------------------|--------------|
| MEMPHIS APP CON | | MEMPHIS TOWER | | GND CON | |
| 119.1 | 291.6 | (Rwy 9-27) | 118.3 257.8 | (Rwy 9-27) | 121.0 379.2 |
| 125.8 | 338.3 | (Rwys 18C-36C, 18L-36R) | 119.7 257.8 | (Rwys 18C-36C, 18L-36R) | 121.9 379.2 |
| | | (Rwy 18R-36L) | 128.425 257.8 | (Rwy 18R-36L) | 121.65 379.2 |

| |
|--------|
| D-ATIS |
| 127.75 |

RADAR REQUIRED

| | |
|----------|-------|
| CLNC DEL | CPDLC |
| 125.2 | |



| | | | | | | | |
|-----------------|--------------------|-----------------|--------|-------------|---------|--------------|-----------|
| BUDEE INT RADAR | | FALIX INT RADAR | | 1000 | 5000 | MEM | KEEZE INT |
| 2000 | | 1700 | | | | | |
| 093° | | 1700 | | | | | |
| 6.1 NM | | 4.3 NM | | | | | |
| CATEGORY | A | B | C | D | E | | |
| S-ILS 9 | 466/24 207 (200-½) | | | | | | |
| S-LOC 9 | 720/24 | 461 (400-½) | 720/50 | 461 (400-1) | 720/60 | 461 (400-1¼) | |
| CIRCLING | 940-1 | 599 (600-1) | 940-1½ | 1020-2¼ | 1140-2¾ | 799 (800-2¾) | |

SE-1, 03 DEC 2020 to 31 DEC 2020

SE-1, 03 DEC 2020 to 31 DEC 2020