

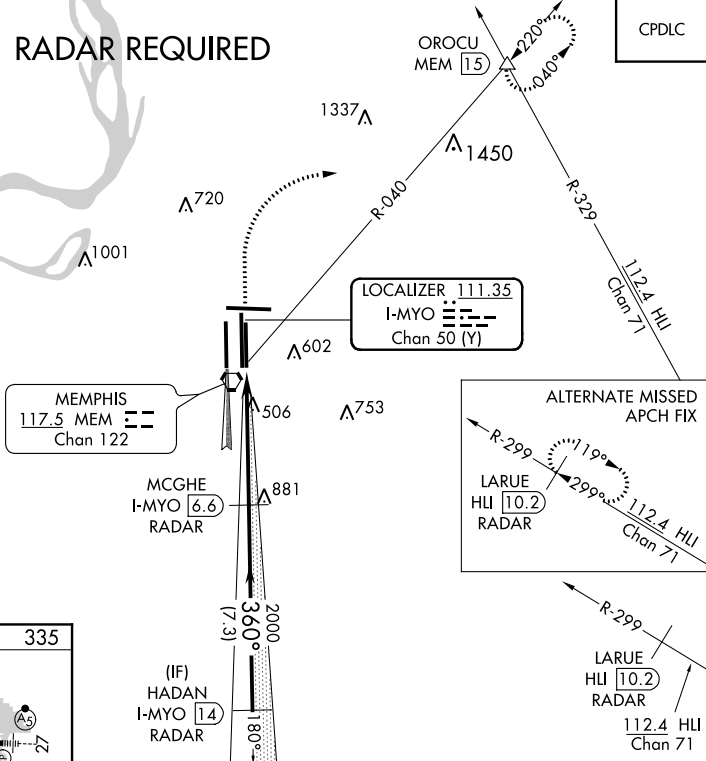
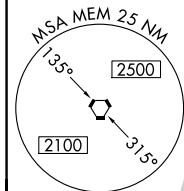
ILS or LOC RWY 36R  
MEMPHIS INTL (MEM)

ALSF-2

**MISSED APPROACH:** Climb to 1000 then climbing right turn to 5000 via heading 070° and MEM VORTAC R-040 to OROCU INT/MEM VORTAC 15 DME and hold, continue climb-in-hold to 5000.

D-ATIS  
127.75

## RADAR REQUIRED



1000 ↑	5000 hdg 070°	MEM R-040	OROCU △	MCGHE I-MYO <u>6.6</u> RADAR 2000	HADAN I-MYO <u>14</u> RADAR
CATEGORY	A		B	C	D
S-ILS 36R	535/18 200 (200-½)				535/24 200 (200-½)
S-LOC 36R	760/24 425 (500-½)		760/40 425 (500-¾)		760/50 425 (500-1)
<b>C</b> CIRCLING	940-1 599 (600-1)		940-1½ 599 (600-1½)		1020-2¼ 799 (800-2¼)